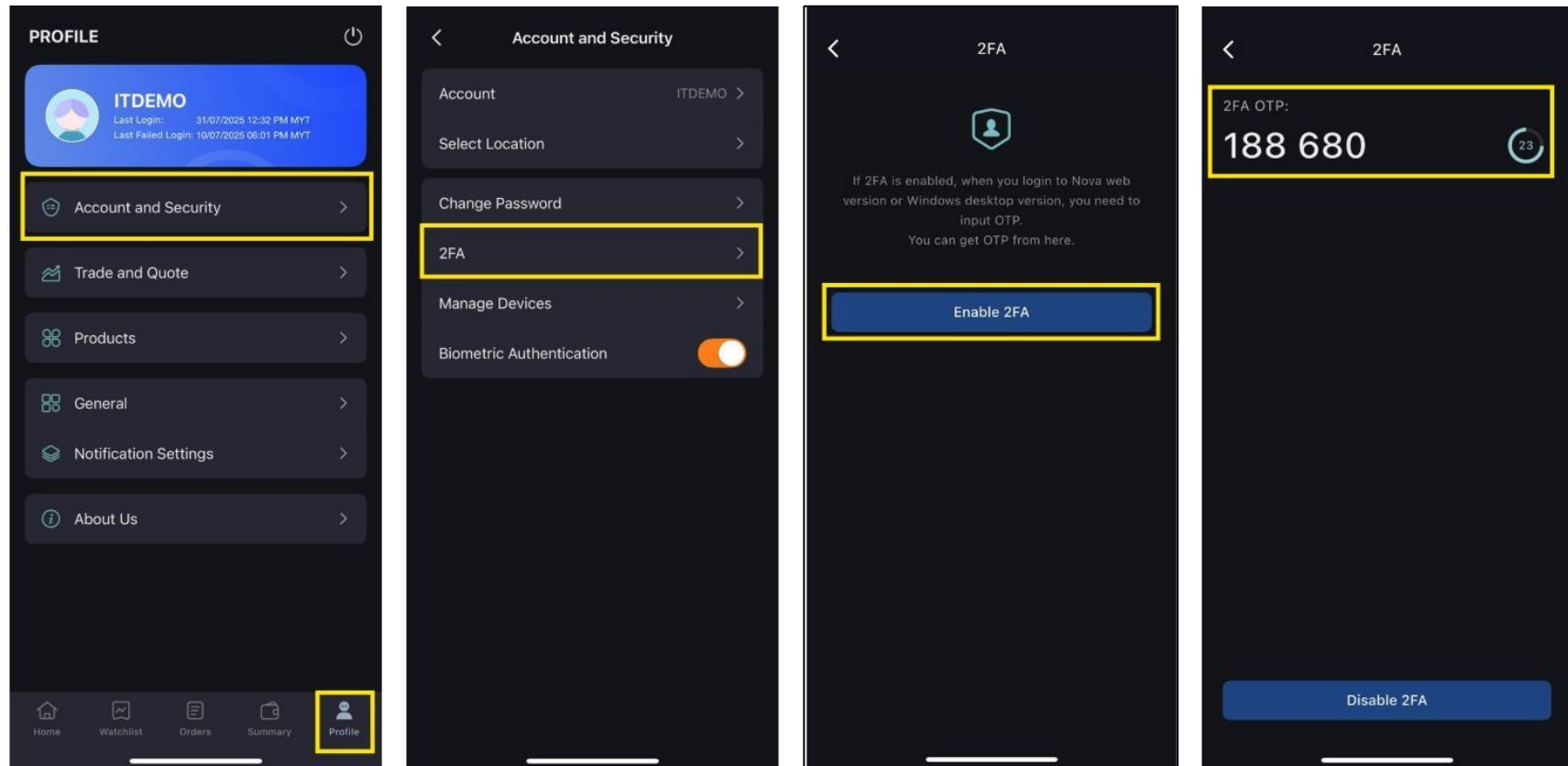


## How to Enable and Receive 2FA OTP on Phillip Nova 2.0 Mobile App

Once logged in to your Phillip Nova 2.0 mobile app, follow these steps:

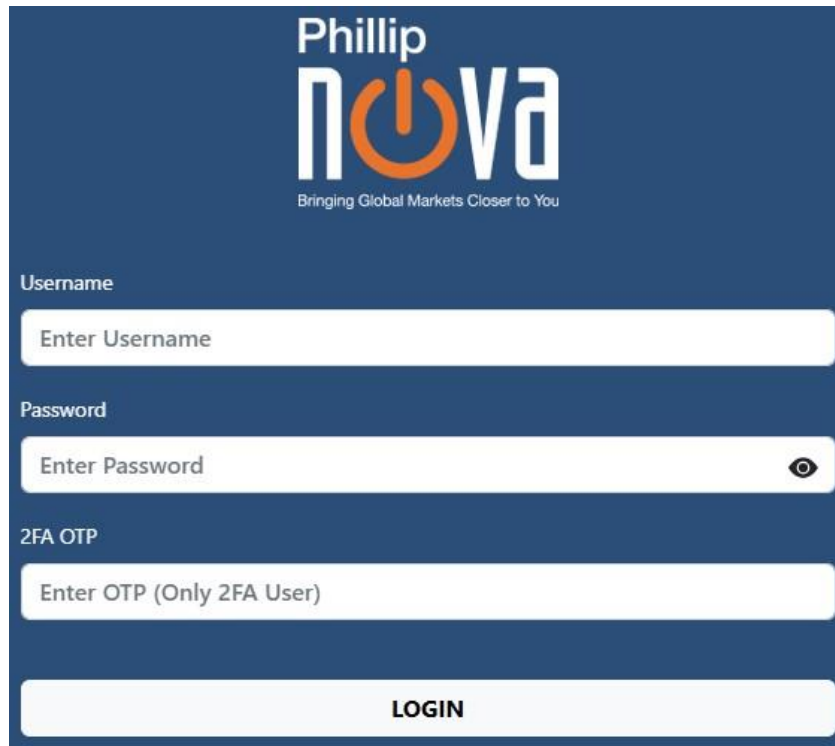
**Profile > Account and Security > 2FA > Enable 2FA**

After enabling it, you will receive your 2FA OTP verification codes from the app whenever authentication is required.



## How to Log In to Phillip Nova 2.0

1. Enter your username and password, which are the same credentials you use for your Phillip Nova 2.0 trading platform. You will also need to enter the 2FA one-time password (OTP) from the Nova Mobile Application.



The image shows the login interface for Phillip Nova 2.0. At the top, the logo "Phillip nova" is displayed in white on a dark blue background, with the tagline "Bringing Global Markets Closer to You" below it. The "nova" part of the logo features an orange power button symbol. Below the logo, there are three input fields: "Username" with a placeholder "Enter Username", "Password" with a placeholder "Enter Password" and a toggle eye icon, and "2FA OTP" with a placeholder "Enter OTP (Only 2FA User)". At the bottom, there is a large white button labeled "LOGIN".

Phillip  
nova  
Bringing Global Markets Closer to You

Username  
Enter Username

Password  
Enter Password

2FA OTP  
Enter OTP (Only 2FA User)

LOGIN