



(362533-U)

***PHILLIP CAPITAL SDN BHD***

# **Phillip CFD Trader User Guide**

## POEMS TRADER \_ CONTRACT FOR DIFFERENCE (CFD)

### Table of Contents

Chapter 1: Introduction.....	4
About Phillip CFD Trader.....	4
System Requirements.....	4
Help and Assistance.....	5
Chapter 2: Installation .....	5
Chapter 3: Logging in .....	3
Chapter 4: Using The System .....	7
4.1    ICONS .....	7
4.2    Workspace Layout .....	8
4.3    FILE .....	10
4.4    VIEW .....	15
Chapter 5: Trading .....	17
5.0    Order Ticket .....	17
5.1    Initiate a Trade .....	19
5.2    Order Types .....	20
5.2 a) To Place a Limit Order .....	20
5.2b) To Place a Stop Limit Order .....	22
5.3    Price .....	23
5.3 a) Selecting DMA Price View .....	23
5.3 b) Trading from Price View .....	23
5.3 c) Sorting the Contracts in Price View in ascending /descending order .....	24
5.3 d) Organise Price View Information .....	24

5.3 e) Right Click for more function on Price View .....	25
5.4 Set New Alerts .....	26
5.4 a) Set Price Alerts .....	26
5.5 Watchlist Editor .....	27
5.5 a) Creating a WatchList .....	27
5.5 b) Creating sector .....	28
5.5 c) Changing Layout- Colour .....	29
5.5 d) Adding WatchList to Favourites .....	30
5.5 e) Changing Layout-Column .....	31
5.6 Contract Explorer .....	31
5.6 a) Contract List .....	32
5.6 b) Watchlist .....	32
Chapter 6: Account .....	32
6.0 Account Management .....	32
6.1 Order Status .....	35
Chapter 7: Disclaimer .....	36

## Chapter 1: Introduction

### About Phillip CFD Trader

Phillip CFD Trader was designed for the advanced trader in mind. It boasts of new features, which would suit CFD traders who require an intuitive platform for trading and risk management strategies. Bring your CFD trading experience to a new level with Phillip CFDTrader.

You can use Phillip CFD Trader for the following:

- ✦ Trade from charts
- ✦ Execute risk management order types
- ✦ Access company information
- ✦ Analyse intuitive charts using candlestick recognition
  
- ✦ Customise your workspaces

### System Requirements

	<b>Minimum Requirements</b>	<b>Recommended</b>
Memory / RAM	1 GB	1 GB
Processor/ CPU	1 GHz	2 GHz or above
Hard Disk	100 MB	500 MB
Broadband	Leased line or Internet	Leased line or Internet
Resolution	1024 x 768	1280 x 1024
Software*	Latest Java Runtime installed	Latest Java Runtime installed

\*Java Runtime environment <https://www.java.com/en/download/>

## Help and Assistance

For further enquires or trading assistance, please refer to the key contact information below:

CFD Dealing Line: (603) 2711 0026

Email : [cfid@poems.com.my](mailto:cfid@poems.com.my)

Website: <https://www.phillip.com.my/product/cfd-101/>

### Chapter 2: Installation

This part of the user guide describes how to install the Phillip CFD Trader software on your computer. After downloading the software from the provided link, double

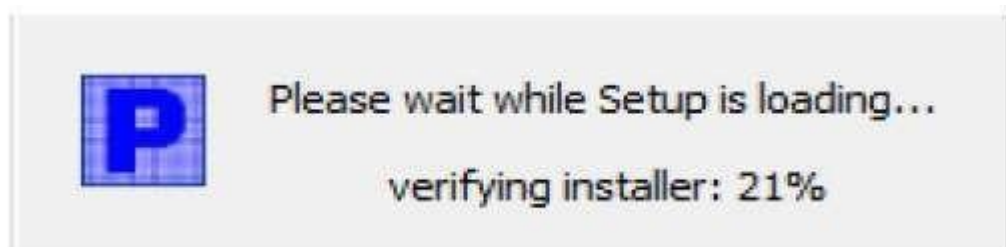
click on the application. The window with security warning will appear. This warning can be ignored in order to proceed further with the installation process.

The following are the steps for installing Phillip CFD Trader:

1. Click **Run**



2. The setup will start extracting files and verifying the installer





3. Click **Next** to begin the installation



4. Choose the Destination Folder for the installation and click **Install**



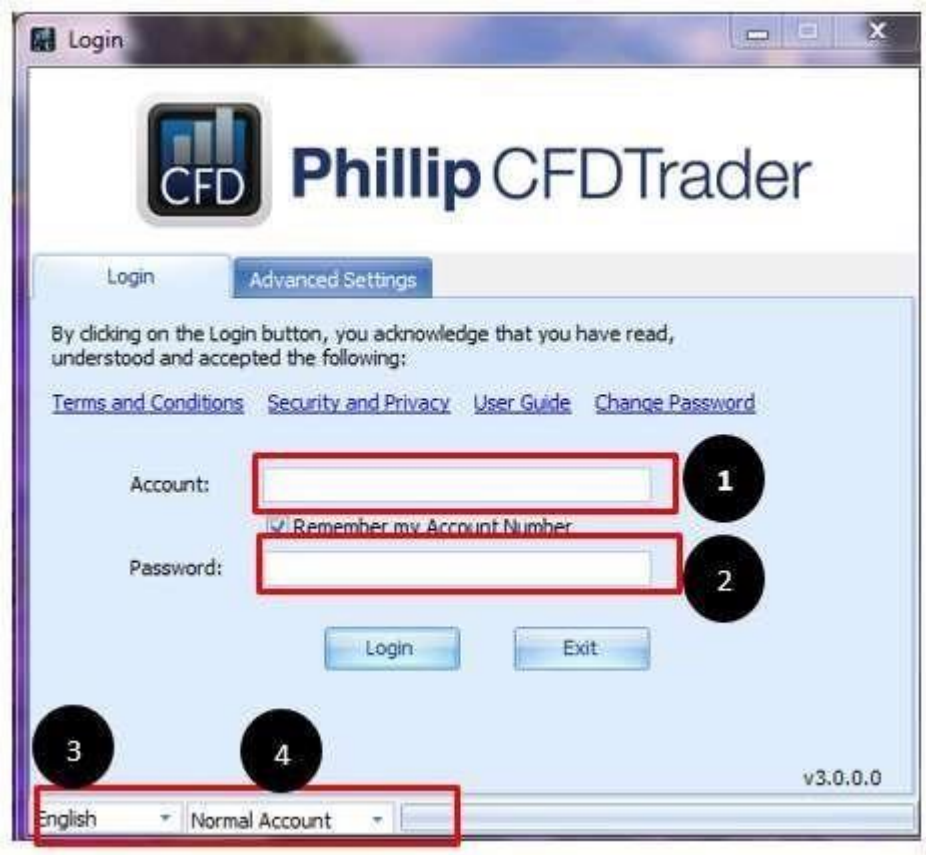
5. Click **Finish** to complete the installation and launch the platform





### Chapter 3: Logging in

The login window shown below will appear after the last step.



1. Enter your Phillip CFD Trader trading account number (CFD).
2. Enter your trading account password  
(*Note: Password is case sensitive*)
3. Switch to your desired language (English or Chinese)
4. Choose the “**Normal Account**”

**2FA Authentication registered on mobile device (Optional)**

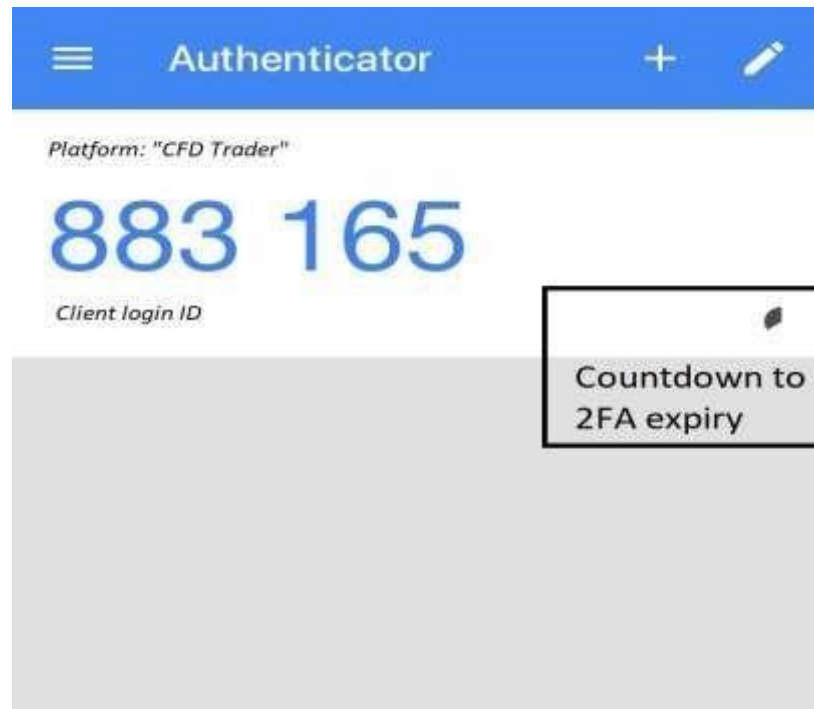
1. Launch CFD Trader on computer → Enter Account number and Password → Click “Login”:



2. On mobile device → turn on Google Authenticator App:



3. Enter OTP pin in OTP-Token field for CFD Trader → Click “Submit”










4. CFD Trader to launch successfully



## **Chapter 4: Using The System**

### **4.1 ICONS**

The icons at the top menu in different window panels provides information about the features and status of Phillip CFD Trader.

Icon	Action	What it means
	Attach/Detach	To attach or detach the window panel from the main platform window, so to view on multiple screens/monitors.
	Export to Excel	To export the table to an Excel file which can be saved and used for future reference.
	WatchList Editor	To customize and edit WatchList(s) and layout of Price View.
	Show World Indices	To display the world indices in Price View.
	Expand/ Collapse	To expand or collapse the list.
	Sort	To sort the list in an alphabetical order.
	Server Connection	Detect server connection.

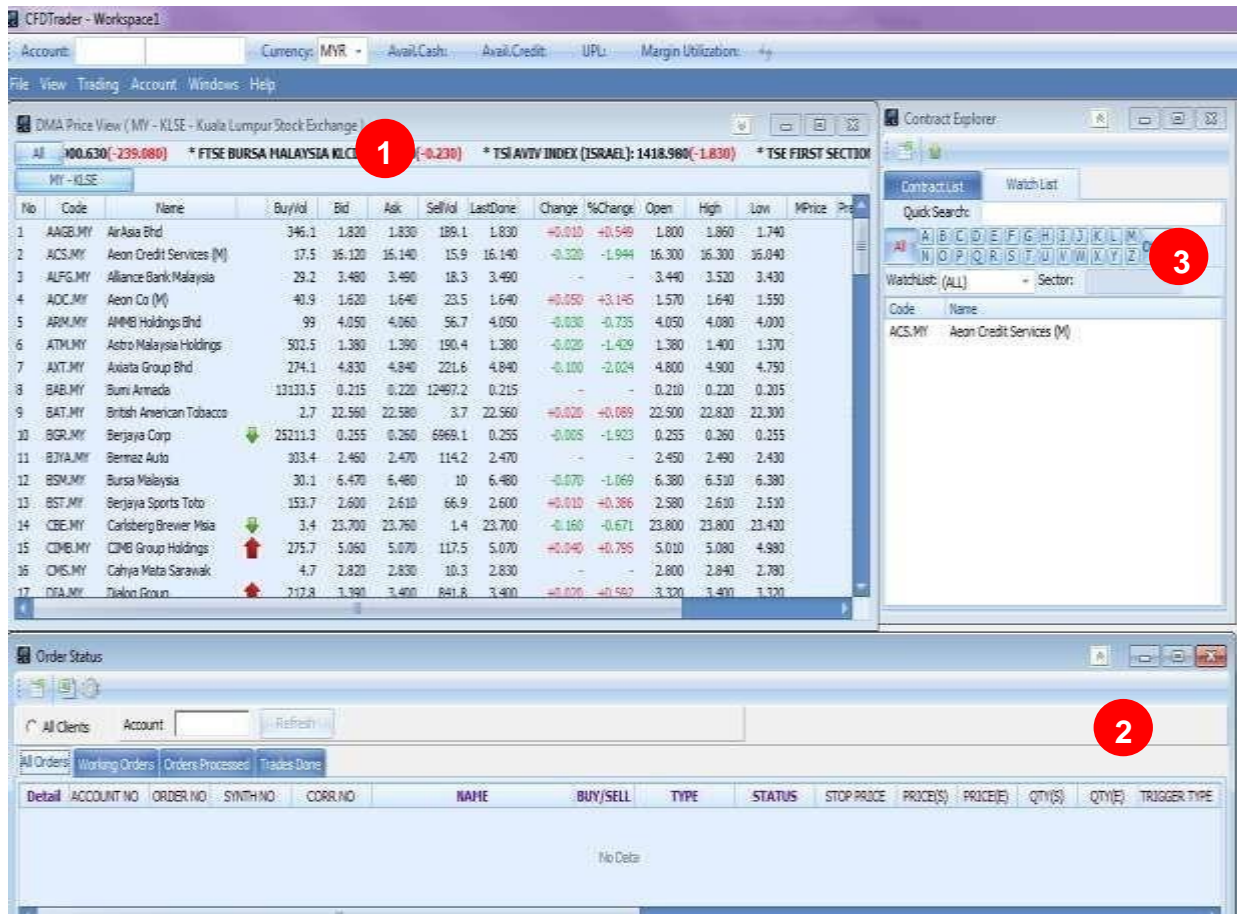
## 4.2 Workspace Layout

You can choose between Basic and Advanced Workspace.

The **Basic Layout** for CFD Trader consists of three window panels within the main window for the platform: 1. Price View

2. Order Status

3. Contract Explorer



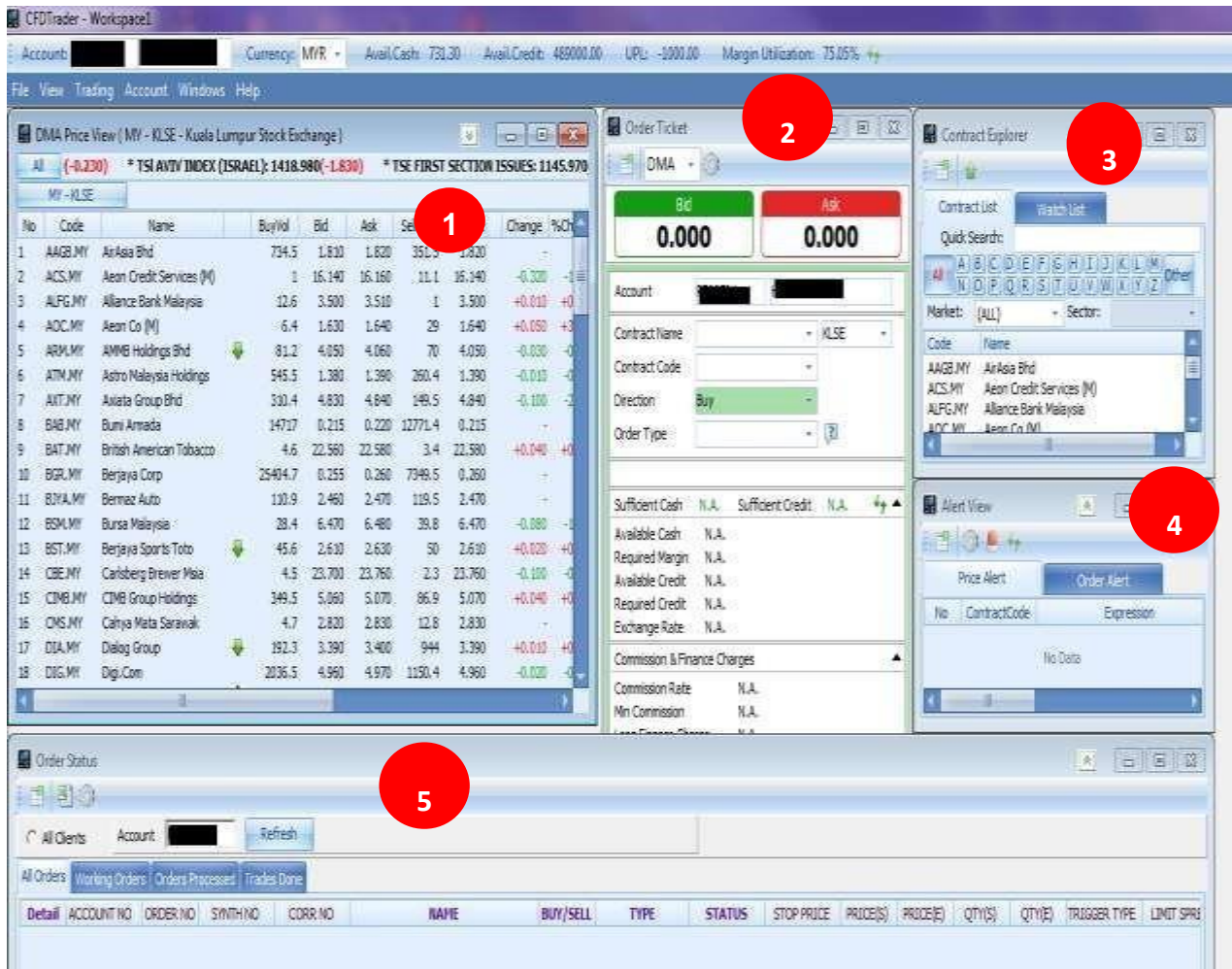


The **Advanced Layout** for CFD Trader consists of five window panels within the main window for the platform: 1. Price View

2. Order Ticket

3. Contract Explorer 4. Alert View

5. Order Status

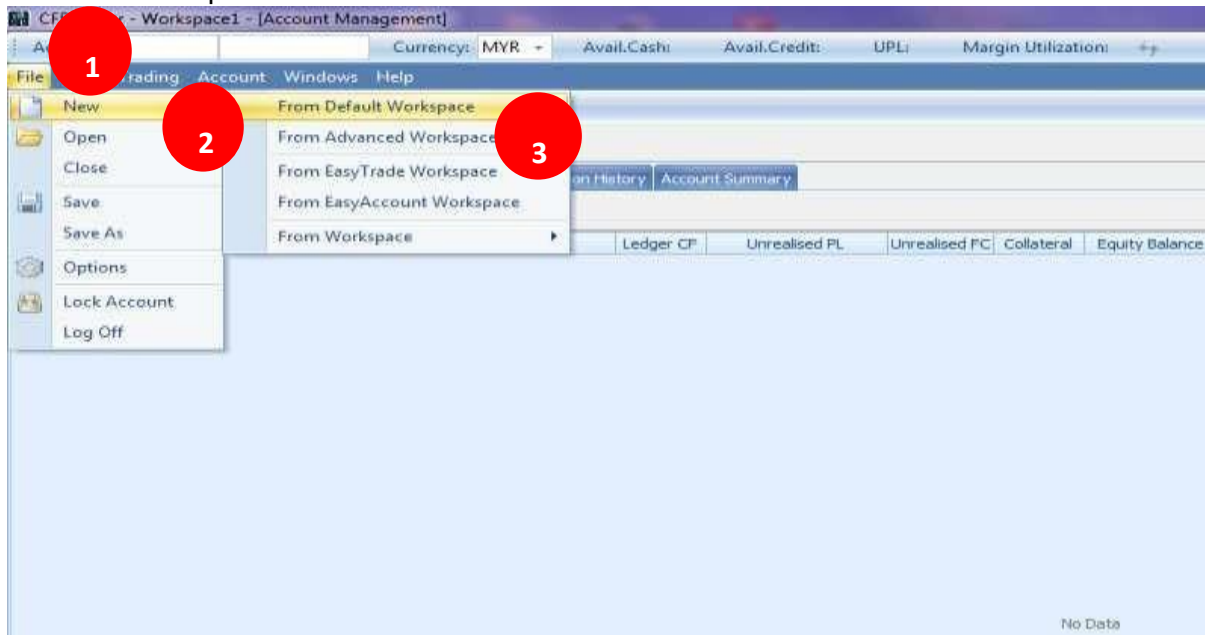


### 4.3 FILE

This menu will display options related to your workspaces, or where you can lock/log off your account.

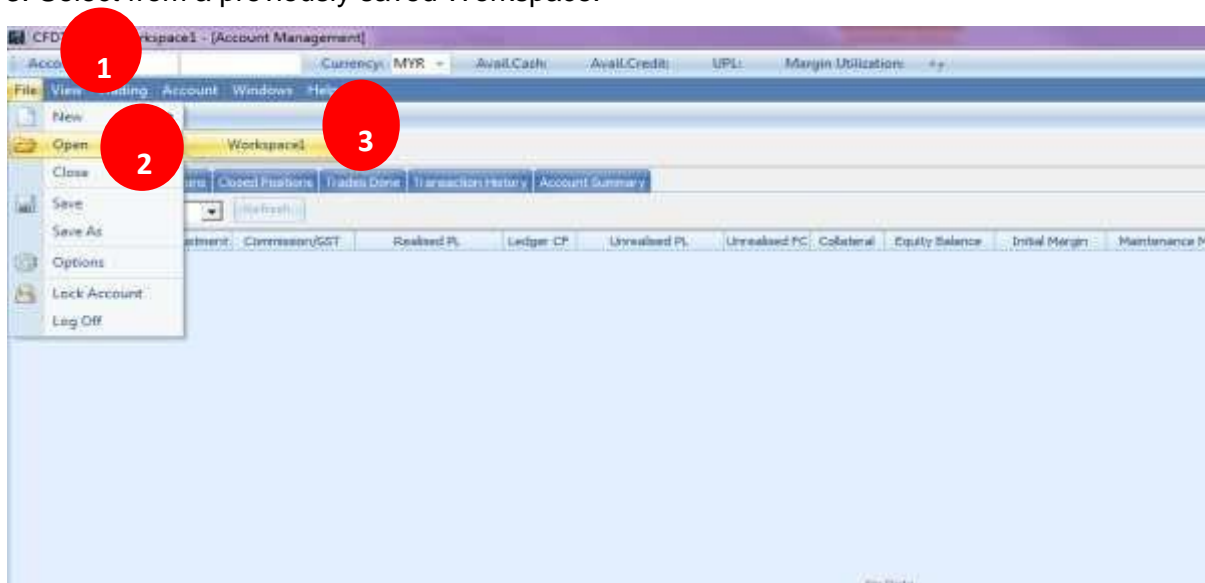
To create a **new Workspace**.

1. Click **File**.
2. Click **New**.
3. Select either **From Default Workspace**, **From Advanced Workspace** or from a previously saved Workspace.



To **open a Workspace** from previously saved workspaces.

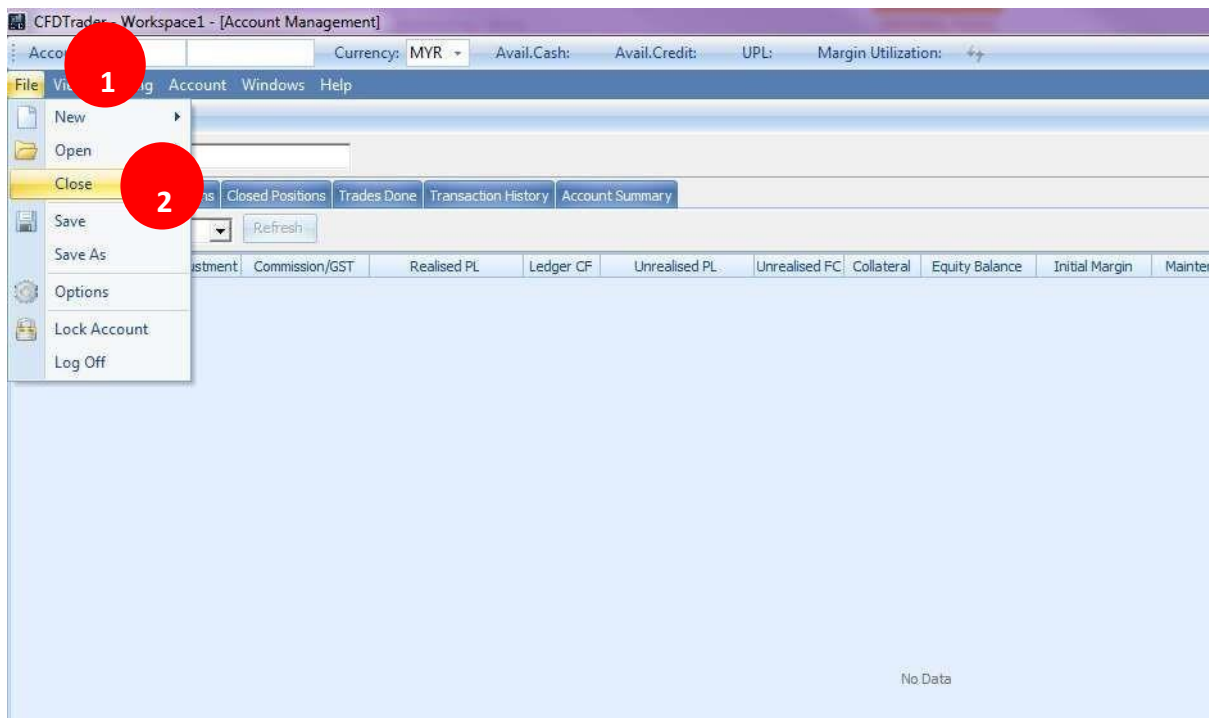
1. Click **File**.
2. Click **Open**.
3. Select from a previously saved Workspace.



To **close** the current workspace.

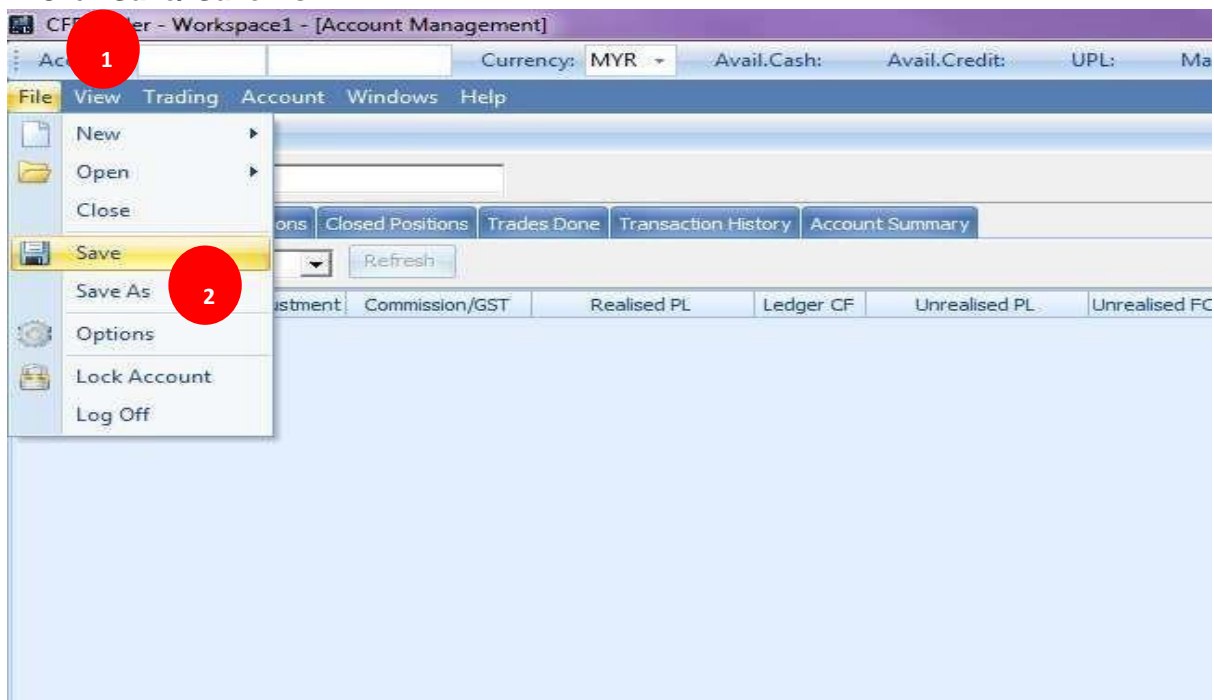


1. Click **File**
2. Click **Close**.



To **save** the current workspace.

1. Click **File**.
2. Click **Save/ Save As**.

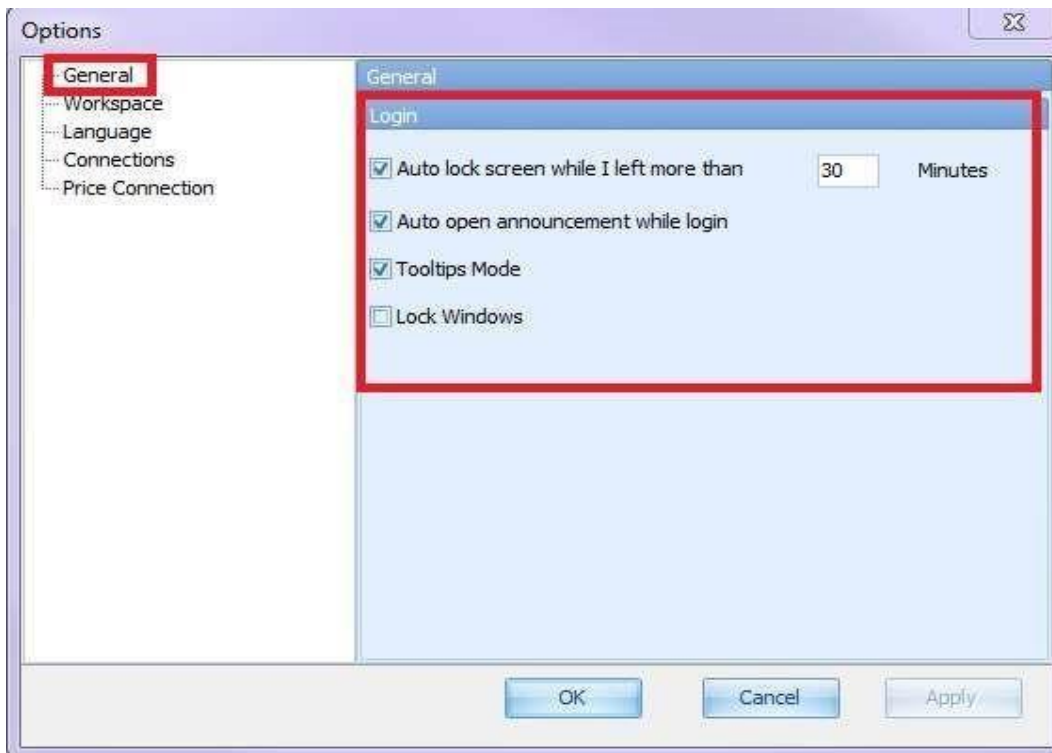


To access Phillip CFD Trader **Options**.

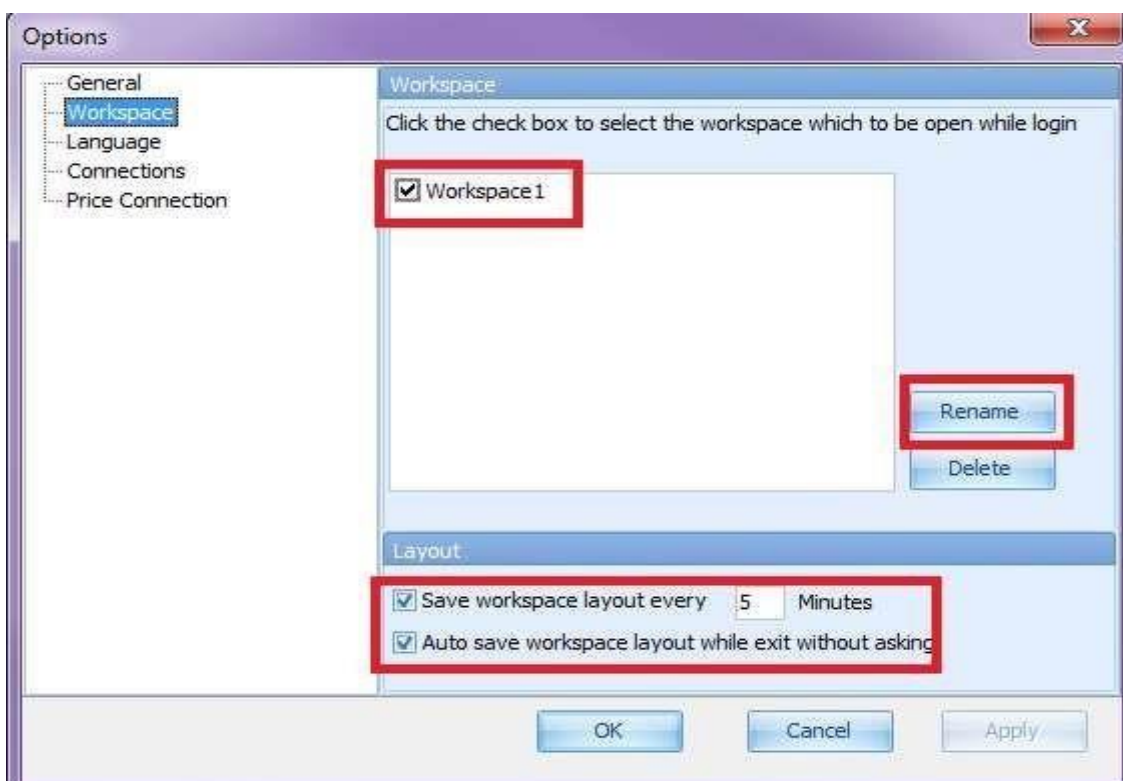
1. Click **File**.

2. Click **Options**.

File **Options** **General Settings**



File **Options** **Workspace Settings**

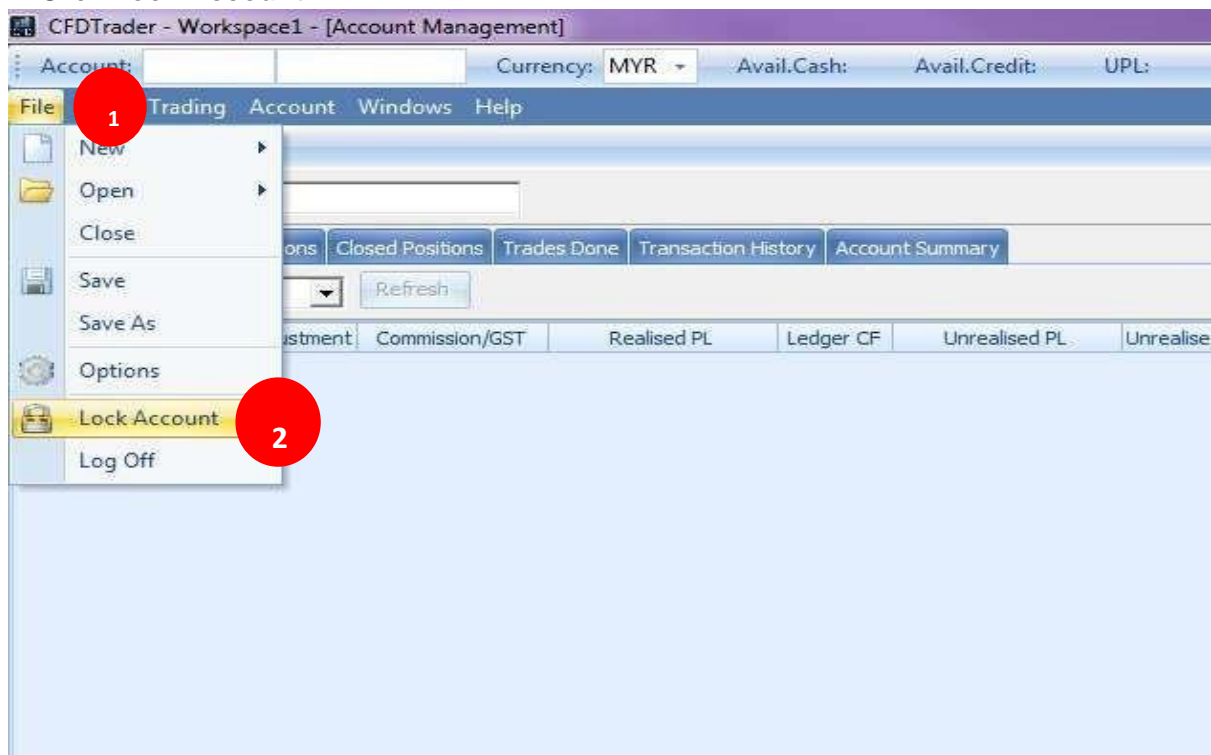


File **Options** **Language**



To lock the account when the platform is not being used.

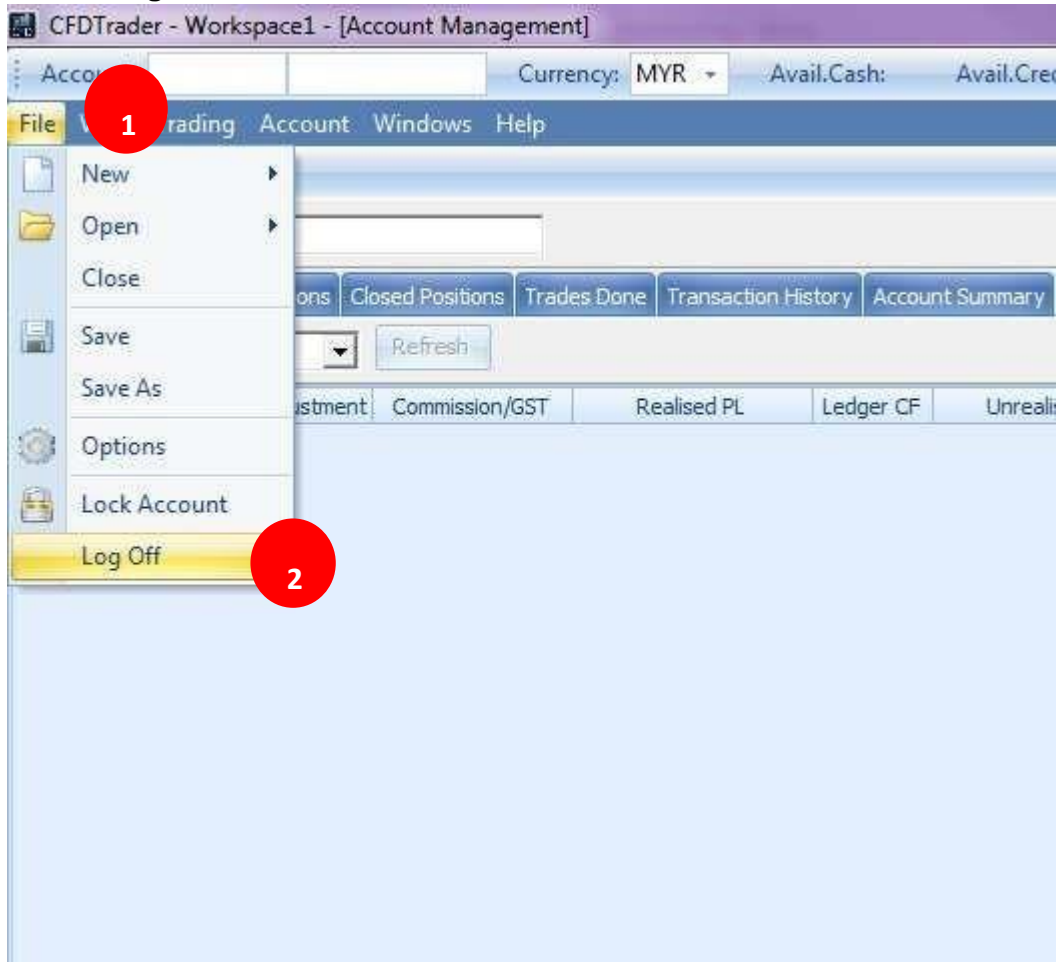
1. Click **File**.
2. Click **Lock Account**.



To **Log off** from Phillip CFD Trader

1. Click **File**.

2. Click **Log Off**.



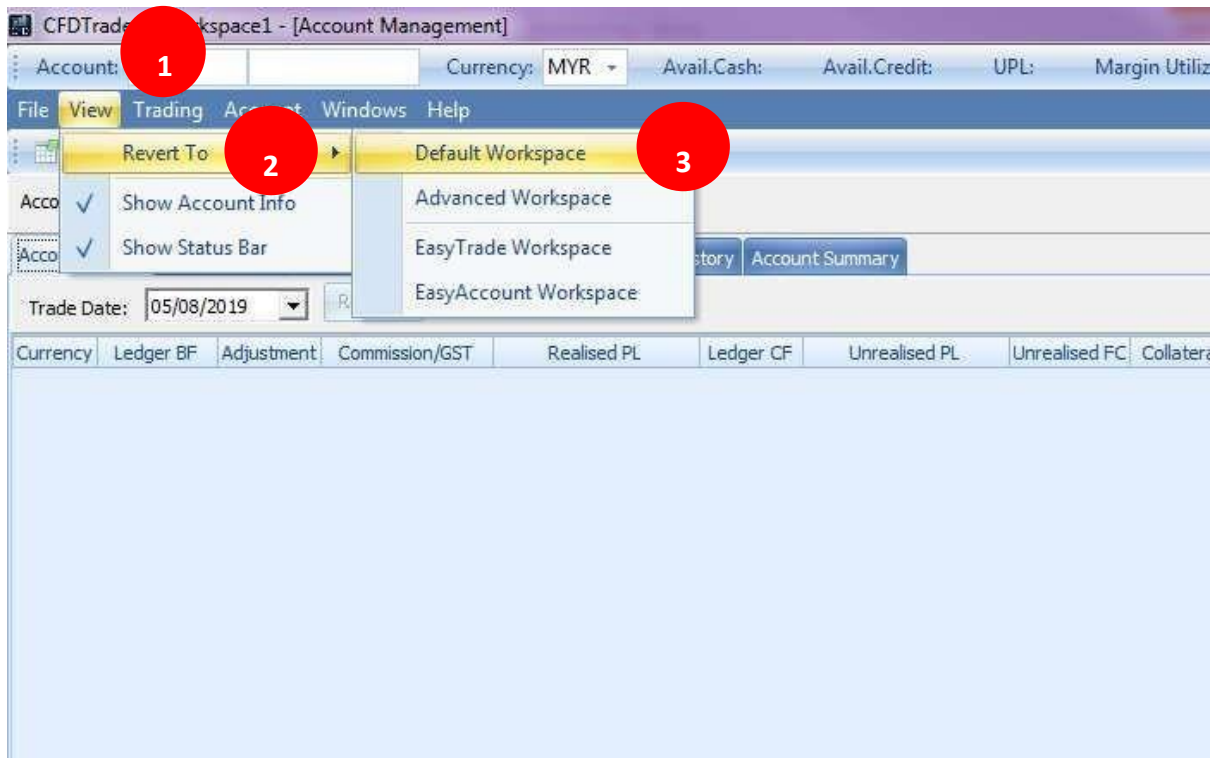
## 4.4 VIEW

The menu will display options related to platform layout

### REVERT TO

To revert back to the last saved workspace, basic or advanced workspace.

1. Click **View**.
2. Click **Revert To**.
3. Select either **Default Workspace** or **Advanced Workspace**.

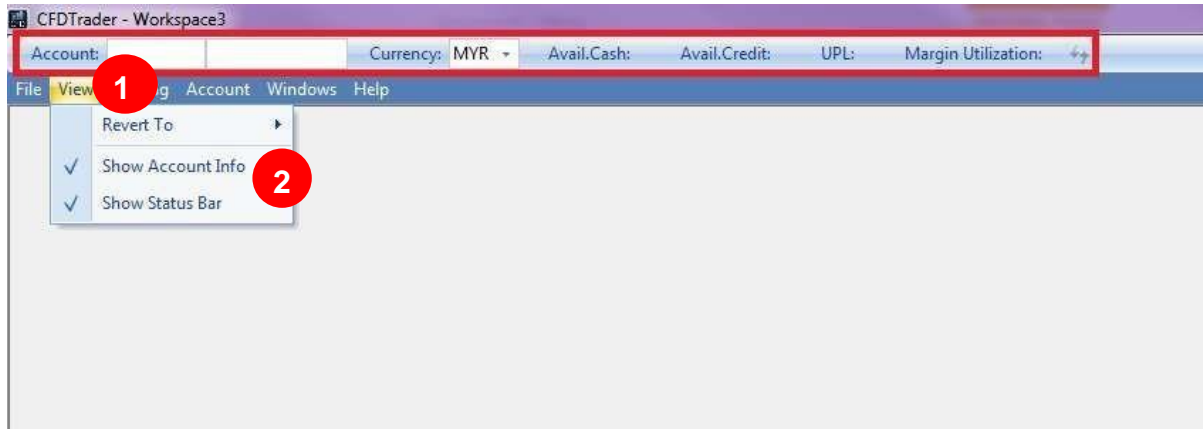


## SHOW ACCOUNT INFO

If this option is checked, some of your account details, such as available cash, available credit, unrealized profit/loss and margin utilization, will be shown across the top the platform. The information is updated every minute.

1. Click **View**.
2. Click **Show Account Info**.

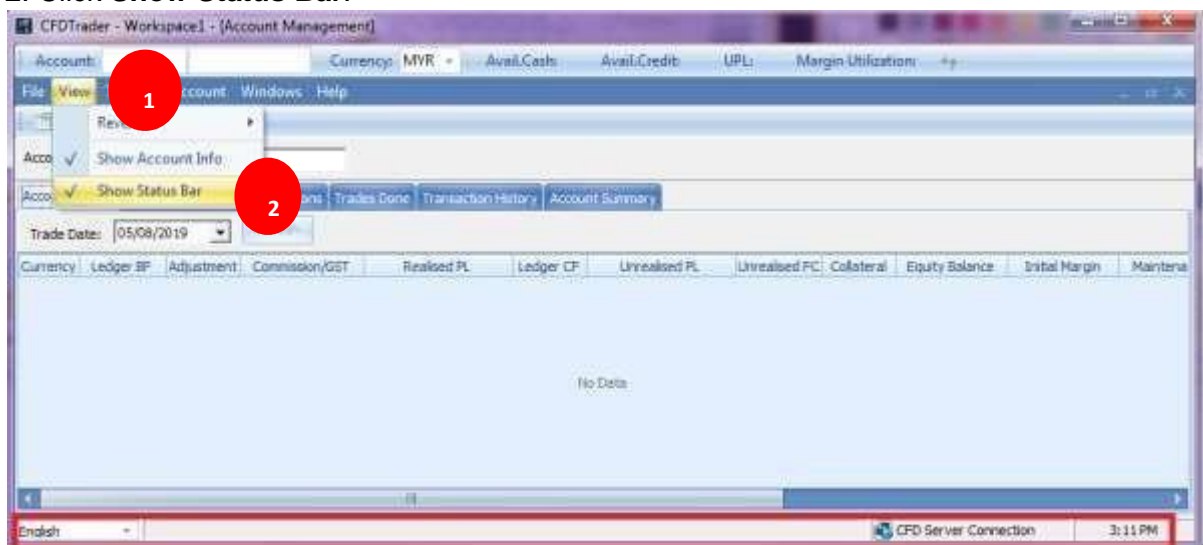
### Account Info (Top)



## Show Status Bar

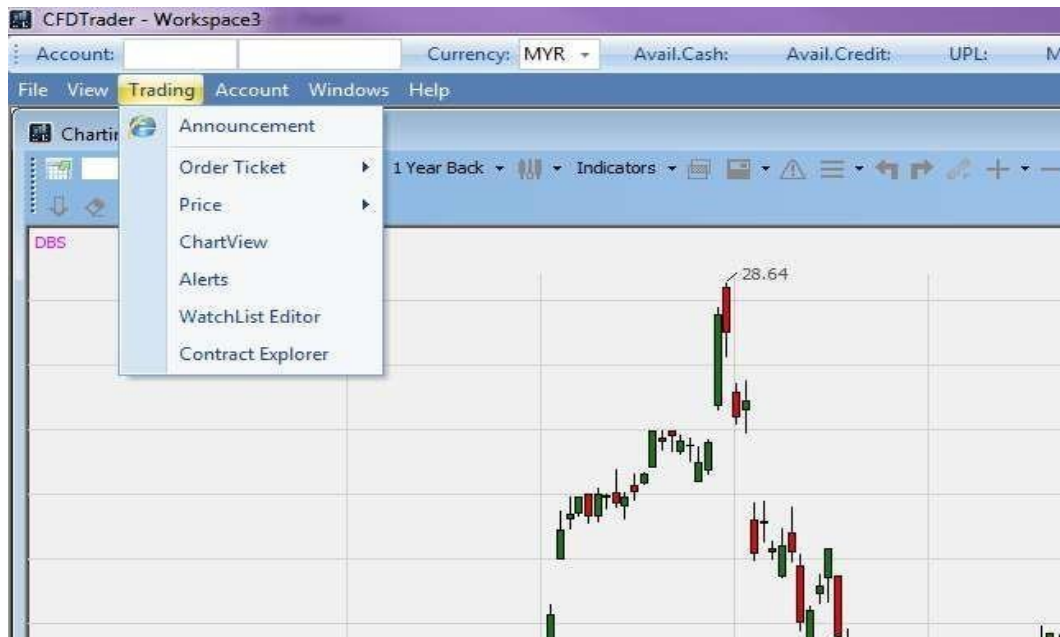
If this option is checked, the status bar will be displayed at the bottom of the platform.

1. Click **View**.
2. Click **Show Status Bar**.



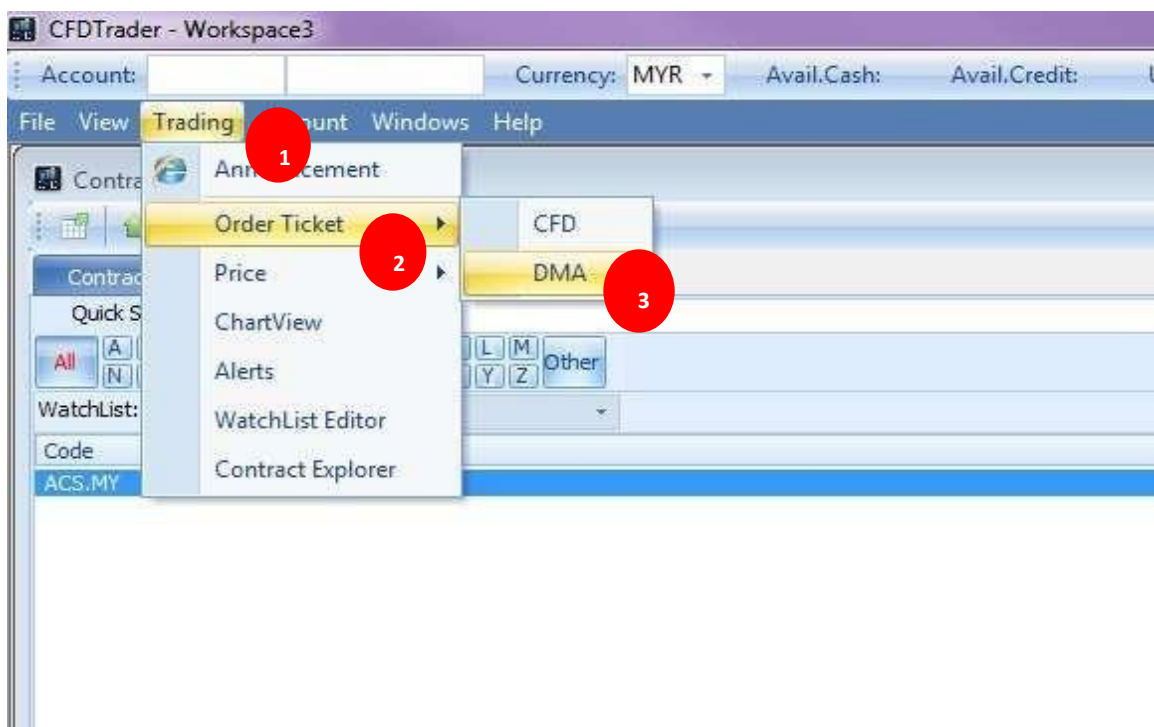
## Chapter 5: Trading

Click on the **Trading** Menu to display these options



### 5.0 Order Ticket

Click on **Order Ticket** to initiate a trade through **DMA**. The **Order Ticket** will show you if you have sufficient cash or credit to place a trade. You can also view the associated commission and finance charges for each individual contract.





*Definitions:*

**Account** - User account number

**Contract** - Name of the contract (counter)

**Order Type** - Type of order to be placed

**Quantity** - Amount to be traded

**Limit Price** - Stated limit price of an order

**Stop Price** - Stop price to trigger a limit order

**Trailing Step** - Stop price which is set at a percentage from the market price

**Limit Spread** - Adjusts the stop price of a Trailing Stop-Limit order in terms of number of bids

**Limit Order No.** - Parent limiting order which the contingent order will bind to


**Duration** - Time validity of an order

**Buy/Sell** - Action desired. If Buy is chosen, the execution box will be in green.

If Sell is chosen, the execution box will be in Red and labelled accordingly

## 5.1 Initiate a Trade

To initiate a trade:

1. Click **Trading**  **Order Ticket**
2. Click **DMA** to display **Order Ticket**
3. Enter Account Number
4. Select Contract Name or Code
5. Choose Direction (Buy or Sell)
6. Select **Limit**, and **Stop Limit** under Order Type
7. How long the order is valid
8. Enter order Quantity
9. Enter the price
10. Complete and verify all fields. Click Submit.
11. A **Preview Order** window will pop up. Click on **Submit** to confirm.
12. An **Order Receipt** window will pop up. Double check order from **Order Status** panel.



***\*An Order Ticket can also be opened through right click on Price View and Chart***

## 5.2 Order Types

Explanation of Order Types

<b>Limit Order</b>	An order to buy or sell at a specific price upon submission (or better).
<b>Stop Limit Order*</b>	An order that combines the features of stop order and a limit order. Once the stop price is reached, the stop-limit order becomes a limit order to buy or to sell at a specified price (or better).

### 5.2 a) To Place a Limit Order

A **Limit** order is an order to buy or sell at submitted price or better. **Limit** orders are filled at the limit price (or better), but are not guaranteed a fill.

To place a **Limit** order:

1. Select from list of contracts under **Contract Name** or **Contract Code**.
2. Select **Buy** or **Sell** under **Direction**.
3. Select **Limit** under **Order Type**.
4. Enter order **Quantity**.
5. Enter desired limit price in **Limit Price** field.
6. Complete and verify all fields. Click **Submit**.
7. A **Preview Order** window will pop up. Click **Submit** to confirm.
8. An **Order Receipt** window will pop up. Double-check order from the **Order Status** panel.

Order Ticket - AAGB.MY

DMA

Bid: 1.900 | Ask: 1.910

Account: [Redacted]

Contract Name: AirAsia Bhd | Contract Code: AAGB.MY | Direction: Buy | Order Type: DMA Limit | Duration: Day

Quantity: 100 | Limit Price: 1.900 | Contract Value: 190.00 MYR

Sufficient Cash: Yes | Sufficient Credit: Yes

Available Cash: 1,298.21 MYR | Required Margin: 38.00 MYR (20%) | Available Credit: 488,300.00 MYR | Required Credit: 190.00 MYR

Commission & Finance Charges

Commission Rate: 0.500% of contract value | Min Commission: 60.00 (MYR) | Long Finance Charge: 5.50% p.a. | Short Finance Charge: 0.00% p.a.

Submit

Preview Order

Please check your order details below

Contract: AirAsia Bhd (AAGB.MY)  
 Direction: Buy  
 Order Type: DMA Limit  
 Duration: Day  
 Quantity: 100  
 Limit Price: 1.820

Disclaimers  
 DMA Limit - An order allowing clients to participate in the underlying cash market directly. DMA Limit orders will be filled at the limit price (or better), but are not guaranteed a fill.

Submit | Cancel

Order Receipt

You have submitted an order successfully

Order No. 34550  
 Contract AirAsia Bhd (AAGB.MY)  
 Direction Buy  
 Order Type DMA Limit  
 Duration Day  
 Quantity 100  
 Limit Price 2.900

Close

### 5.2b) To Place a Stop Limit Order

A **Stop Limit** order is an order that combines the features of a stop order and a limit order. Once the stop price is reached, the **Stop Limit** order becomes a limit order to buy or sell at the specified price.

To place a **Stop Limit** order:

1. Select from list of contracts under **Contract Name** or **Contract Code**.
2. Select **Buy** or **Sell** under **Direction**.
3. Select **Stop Limit** under **Order Type**.
4. Enter order **Quantity**.
5. Enter desired stop price in **Stop Price** field. Select **Ask Price**, **Bid Price** or **Last Done Price** to trigger **Stop Price**.
6. Enter desired limit price in **Limit Price** field. Check next to **Limit Price** field to enter **Limit Spread** instead.
7. Complete and verify all fields. Click **Submit**.
8. A **Preview Order** window will pop up. Click **Submit** to confirm.
9. An **Order Receipt** window will pop up. Double-check order from the **Order Status** panel.

Order Ticket - AAGB.MY

DMA

Bid: 1.900 | Ask: 1.910

Account: [Redacted]

Contract Name: AirAsia Bhd (1) | KLSE

Contract Code: AAGB.MY (1) | Currency: MYR

Direction: Buy (2)

Order Type: DMA Stop Limit (3)

Duration: Day

Quantity: 100 (4) | Min: 100

Stop Price: 1.910

Limit Price: 1.910 (5)

Stop Price Trigger: Last Done

Sufficient Cash: Yes | Sufficient Credit: Yes

Available Cash: 1,298.21 MYR

Required Margin: 38.20 MYR (20%)

Available Credit: 488,300.00 MYR

Required Credit: 191.00 MYR

Commission & Finance Charges

Commission Rate: 0.500% of contract value

Min Commission: 60.00 (MYR)

Long Finance Charge: 5.50% p.a.

Short Finance Charge: 0.00% p.a. (6)

Submit

*\*Note:*

*The stop order will be triggered when the relevant market price match the stop price.*

*For example, a Buy **Stop Limit** order will be triggered once the Ask price matches the Buy Stop price. For Sell **Stop Limit** order, it will be triggered once the Bid price matches the Sell Stop price.*

**Note:** *The stop order will be triggered when the relevant market price matches the stop price*



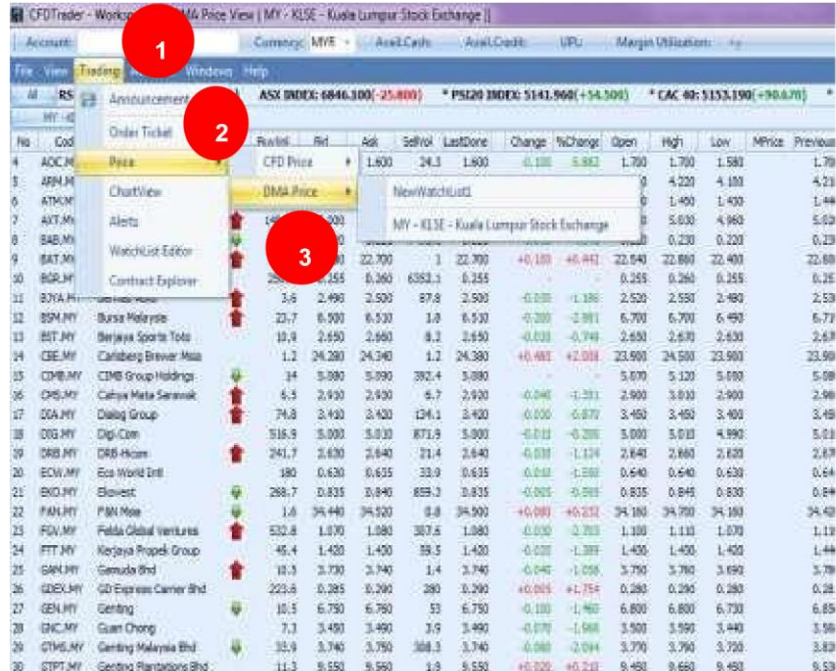
### 5.3

#### Price

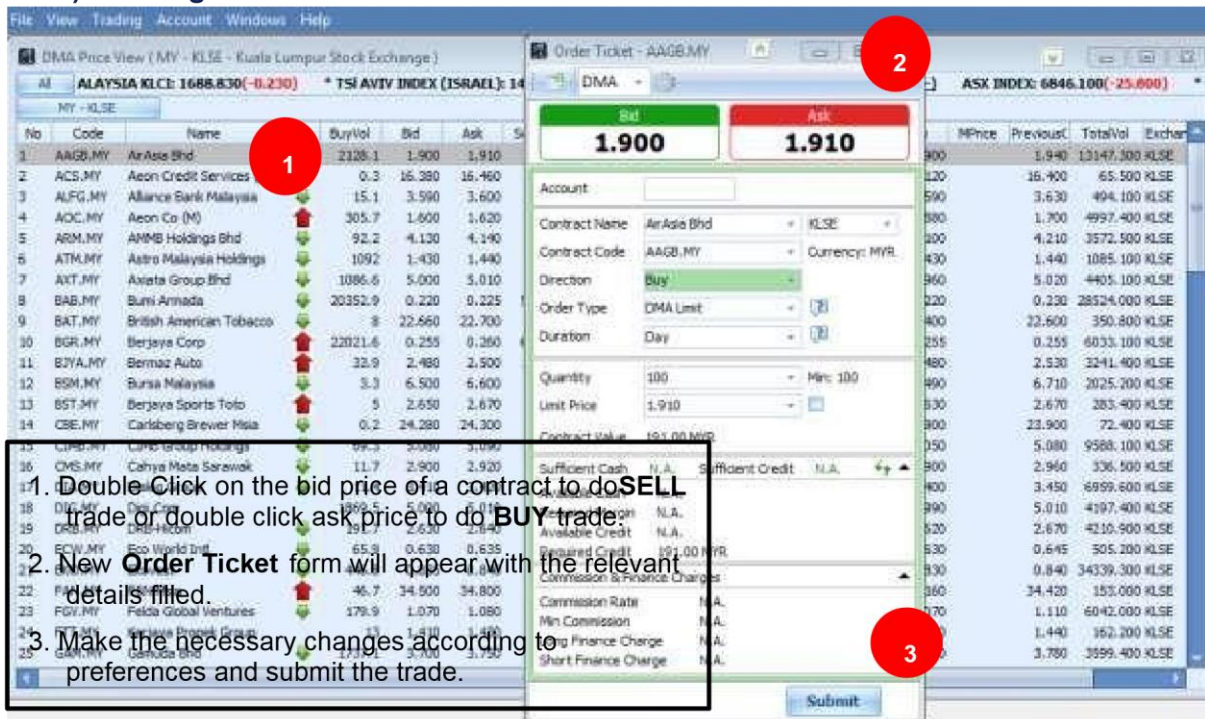
The Price option displays the saved WatchList and contracts by exchanges and products. You can select from DMA price.

#### 5.3 a) Selecting DMA Price View

1. Click on **Trading**
2. Click on **Price**
3. Click on **DMA Price**
4. Select a **Price View**



#### 5.3 b) Trading from Price View





5.3

c) Sorting the Contracts in Price View in ascending /descending order

Click on column name to sort in ascending or descending

No	Code	Name	BuyVol	Bid	Ask	SeVol	LastDone	Ch	Open	High	Low	MPrice	PreviousC	TotalVol	Exch
1	AOC.MY	Aeon Co (M)	305.7	1.600	1.620	20.7	1.620	-0.050	1.700	1.700	1.580	1.700	1.700	4997.400	KLSE
2	ACS.MY	Aeon Credit Services (M)	0.3	16.380	16.460	2.9	16.460	+0.060	16.400	16.460	16.120	16.400	16.400	65.500	KLSE
3	AAGB.MY	AirAsia Bhd	1921	1.900	1.910	599.1	1.910	-0.020	1.900	1.910	1.900	1.900	1.940	13168.900	KLSE
4	ALFG.MY	Alliance Bank Malaysia	36.1	3.590	3.600	4.4	3.590	-0.040	3.610	3.620	3.590	3.630	3.630	494.100	KLSE
5	ARML.MY	AMMB Holdings Bhd	92.2	4.130	4.140	13.1	4.130	-0.080	4.190	4.220	4.100	4.210	3572.500	KLSE	
6	ATM.MY	Astro Malaysia Holdings	1092	1.430	1.440	80.1	1.440	-	1.440	1.450	1.430	1.440	1085.100	KLSE	
7	AXT.MY	Axiata Group Bhd	1086.6	5.000	5.010	30.1	5.000	-0.020	4.960	5.030	4.960	5.020	4405.100	KLSE	
8	BGR.MY	Berjaya Corp	22021.6	0.255	0.260	6338.8	0.260	+0.005	0.255	0.260	0.255	0.255	6033.100	KLSE	
9	BST.MY	Berjaya Sports Toto	5	2.650	2.670	66.7	2.670	-	2.650	2.670	2.630	2.670	283.400	KLSE	
10	BJYA.MY	Bernaz Auto	33.9	2.480	2.500	1492.8	2.500	-0.030	2.520	2.550	2.480	2.530	3241.400	KLSE	
11	BAT.MY	British American Tobacco	8	22.560	22.700	0.5	22.660	+0.060	22.540	22.860	22.400	22.600	350.800	KLSE	
12	BAB.MY	Bumi Armada	20352.9	0.220	0.225	5854.5	0.220	-0.010	0.220	0.230	0.220	0.230	28524.000	KLSE	
13	BSM.MY	Bursa Malaysia	1.1	6.500	6.600	7.3	6.500	-0.210	6.700	6.700	6.490	6.710	2028.600	KLSE	
14	CMS.MY	Cahaya Mata Sarawak	1.7	2.900	2.920	5.1	2.900	-0.060	2.900	3.010	2.900	2.960	346.500	KLSE	
15	CBE.MY	Carlsberg Brewer Msa	0.2	24.280	24.300	2	24.300	+0.400	23.900	24.500	23.900	23.900	72.400	KLSE	
16	CMB.MY	CIMB Group Holdings	69.3	5.080	5.090	684.4	5.080	-	5.070	5.120	5.050	5.080	9588.100	KLSE	
17	DIA.MY	Dialog Group	11.4	3.410	3.420	10.5	3.410	-0.040	3.450	3.450	3.400	3.450	6959.600	KLSE	
18	DIG.MY	Digi.Com	1869.5	3.000	3.010	113.4	3.000	-0.010	3.000	3.010	2.990	3.010	4197.400	KLSE	
19	DRB.MY	DRB-Hicom	191.7	2.630	2.640	92.5	2.640	-0.030	2.640	2.660	2.620	2.670	4210.900	KLSE	
20	ECW.MY	Eco World Intl	35.9	0.630	0.640	38.9	0.630	-0.015	0.640	0.640	0.630	0.645	535.200	KLSE	
21	EKO.MY	Ekovest	451.8	0.835	0.840	760	0.835	-0.005	0.835	0.845	0.830	0.840	34339.300	KLSE	
22	FAM.MY	FAM Msa	46.7	34.500	34.800	1.2	34.500	+0.090	34.160	34.700	34.160	34.420	153.000	KLSE	
23	FGV.MY	Felda Global Ventures	189.9	1.070	1.080	340.6	1.070	-0.040	1.100	1.110	1.070	1.110	6042.000	KLSE	
24	GAM.MY	Gamuda Bhd	1732.1	3.700	3.750	13.2	3.700	-0.080	3.750	3.760	3.690	3.780	3604.400	KLSE	
25	GDEX.MY	GD Express Carrier Bhd	165.6	0.285	0.290	330	0.285	-	0.280	0.290	0.280	0.285	1846.400	KLSE	

5.3 d) Organise Price View Information

Can drag the columns to customize the Price View Information.

No	Code	Name	BuyVol	Bid	Ask	SeVol	LastDone	Ch	Open	High	Low	MPrice	PreviousC	TotalVol	Exch
1	AOC.MY	Aeon Co (M)	305.7	1.600	1.620	20.7	1.620	-0.050	1.700	1.700	1.580	1.700	1.700	4997.400	KLSE
2	ACS.MY	Aeon Credit Services (M)	0.3	16.380	16.460	2.9	16.460	+0.060	16.400	16.460	16.120	16.400	16.400	65.500	KLSE
3	AAGB.MY	AirAsia Bhd	1921	1.900	1.910	599.1	1.910	-0.020	1.900	1.910	1.900	1.900	1.940	13168.900	KLSE
4	ALFG.MY	Alliance Bank Malaysia	36.1	3.590	3.600	4.4	3.590	-0.040	3.610	3.620	3.590	3.630	3.630	494.100	KLSE
5	ARML.MY	AMMB Holdings Bhd	92.2	4.130	4.140	13.1	4.130	-0.080	4.190	4.220	4.100	4.210	3572.500	KLSE	
6	ATM.MY	Astro Malaysia Holdings	1092	1.430	1.440	80.1	1.440	-	1.440	1.450	1.430	1.440	1085.100	KLSE	
7	AXT.MY	Axiata Group Bhd	1086.6	5.000	5.010	30.1	5.000	-0.020	4.960	5.030	4.960	5.020	4405.100	KLSE	
8	BGR.MY	Berjaya Corp	22021.6	0.255	0.260	6338.8	0.260	+0.005	0.255	0.260	0.255	0.255	6033.100	KLSE	
9	BST.MY	Berjaya Sports Toto	5	2.650	2.670	66.7	2.670	-	2.650	2.670	2.630	2.670	283.400	KLSE	
10	BJYA.MY	Bernaz Auto	33.9	2.480	2.500	1492.8	2.500	-0.030	2.520	2.550	2.480	2.530	3241.400	KLSE	
11	BAT.MY	British American Tobacco	8	22.560	22.700	0.5	22.660	+0.060	22.540	22.860	22.400	22.600	350.800	KLSE	
12	BAB.MY	Bumi Armada	20352.9	0.220	0.225	5854.5	0.220	-0.010	0.220	0.230	0.220	0.230	28524.000	KLSE	
13	BSM.MY	Bursa Malaysia	1.1	6.500	6.600	7.3	6.500	-0.210	6.700	6.700	6.490	6.710	2028.600	KLSE	
14	CMS.MY	Cahaya Mata Sarawak	1.7	2.900	2.920	5.1	2.900	-0.060	2.900	3.010	2.900	2.960	346.500	KLSE	
15	CBE.MY	Carlsberg Brewer Msa	0.2	24.280	24.300	2	24.300	+0.400	23.900	24.500	23.900	23.900	72.400	KLSE	
16	CMB.MY	CIMB Group Holdings	69.3	5.080	5.090	684.4	5.080	-	5.070	5.120	5.050	5.080	9588.100	KLSE	
17	DIA.MY	Dialog Group	11.4	3.410	3.420	10.5	3.410	-0.040	3.450	3.450	3.400	3.450	6959.600	KLSE	
18	DIG.MY	Digi.Com	1869.5	3.000	3.010	113.4	3.000	-0.010	3.000	3.010	2.990	3.010	4197.400	KLSE	
19	DRB.MY	DRB-Hicom	191.7	2.630	2.640	92.5	2.640	-0.030	2.640	2.660	2.620	2.670	4210.900	KLSE	
20	ECW.MY	Eco World Intl	35.9	0.630	0.640	38.9	0.630	-0.015	0.640	0.640	0.630	0.645	535.200	KLSE	
21	EKO.MY	Ekovest	451.8	0.835	0.840	760	0.835	-0.005	0.835	0.845	0.830	0.840	34339.300	KLSE	
22	FAM.MY	FAM Msa	46.7	34.500	34.800	1.2	34.500	+0.090	34.160	34.700	34.160	34.420	153.000	KLSE	
23	FGV.MY	Felda Global Ventures	189.9	1.070	1.080	340.6	1.070	-0.040	1.100	1.110	1.070	1.110	6042.000	KLSE	
24	GAM.MY	Gamuda Bhd	1732.1	3.700	3.750	13.2	3.700	-0.080	3.750	3.760	3.690	3.780	3604.400	KLSE	
25	GDEX.MY	GD Express Carrier Bhd	165.6	0.285	0.290	330	0.285	-	0.280	0.290	0.280	0.285	1846.400	KLSE	

## 5.3

## e) Right Click for more function on Price View

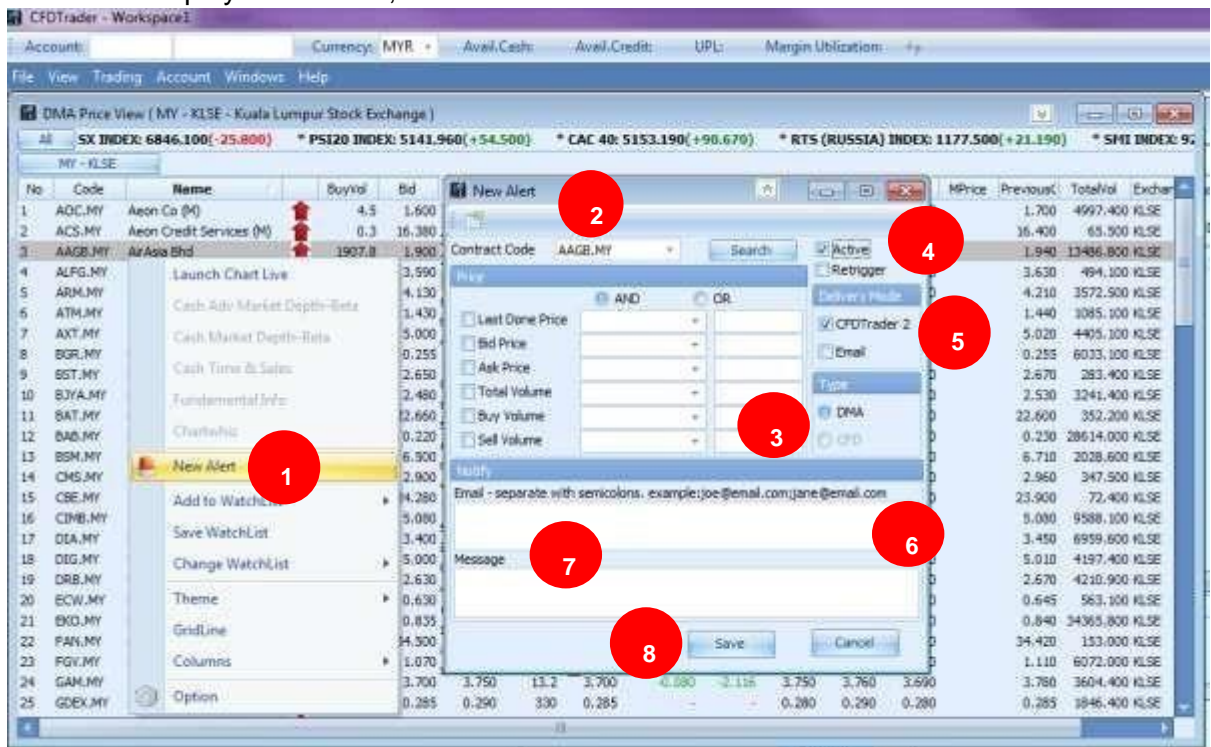
No	Code	Name	BuyVol	Bid	Ask	SellVol	LastDone	Change	%Change	Open	High	Low	MPrice	PreviousC	TotalVol	Exchan
1	AOC.MY	Aeon Co (M)	4.3	1.600	1.620	20.7	1.620	-0.080	-4.706	1.700	1.700	1.580	1.700	4997.400	KLSE	
2	ACS.MY	Aeon Credit Services (M)	0.3	16.380	16.460	2.9	16.460	+0.060	+0.366	16.400	16.460	16.120	16.400	65.500	KLSE	
3	AAGB.MY	AirAsia	1.910	410	3.910	1.910	3.910	-0.030	-1.346	1.950	1.950	1.900	1.940	13358.000	KLSE	
4	ALFG.MY	Alliance	3.600	4.4	3.590	4.4	3.590	-0.040	-1.102	3.630	3.620	3.590	3.630	494.100	KLSE	
5	ARM.MY	AMMB	4.150	1.7	4.130	1.7	4.130	-0.080	-1.900	4.190	4.220	4.100	4.210	3572.900	KLSE	
6	ATM.MY	Astro M	1.440	80.1	1.440	80.1	1.440	0.000	0.000	1.440	1.450	1.430	1.440	1085.100	KLSE	
7	AXT.MY	Axiata	5.020	2265.8	5.000	2265.8	5.000	-0.020	-0.398	4.960	5.030	4.960	5.020	4405.100	KLSE	
8	BGR.MY	Bank Rakyat	0.260	6338.8	0.260	6338.8	0.260	+0.005	+1.961	0.255	0.260	0.255	0.255	6033.100	KLSE	
9	BST.MY	Bank Simpanan Borneo	2.670	66.7	2.670	66.7	2.670	0.000	0.000	2.630	2.670	2.630	2.670	283.400	KLSE	
10	BZIA.MY	Berjaya	2.500	1492.8	2.500	1492.8	2.500	-0.030	-1.185	2.520	2.550	2.480	2.530	3241.400	KLSE	
11	BAT.MY	British American Tobacco	22.700	0.5	22.660	0.5	22.660	+0.060	+0.285	22.540	22.860	22.400	22.600	350.800	KLSE	
12	BAB.MY	Bumiputera	0.225	5854.5	0.220	5854.5	0.220	-0.010	-4.348	0.220	0.230	0.220	0.230	28524.000	KLSE	
13	BSM.MY	Bursa Malaysia	6.600	7.3	6.300	7.3	6.300	-0.210	-3.130	6.700	6.700	6.490	6.710	2028.600	KLSE	
14	CMS.MY	Cahaya	2.920	5.1	2.900	5.1	2.900	-0.060	-2.027	2.900	3.010	2.900	2.960	347.500	KLSE	
15	CBE.MY	Carlsberg	24.300	2	24.300	2	24.300	+0.400	+1.674	23.900	24.500	23.900	23.900	72.400	KLSE	
16	CMB.MY	CIMB	5.090	684.4	5.080	684.4	5.080	0.000	0.000	5.070	5.120	5.050	5.080	9588.100	KLSE	
17	DIA.MY	Dialog	3.420	10.3	3.410	10.3	3.410	-0.040	-1.159	3.450	3.450	3.400	3.450	6959.600	KLSE	
18	DIG.MY	Digi	5.020	3.9	5.000	3.9	5.000	-0.010	-0.200	5.000	5.010	4.990	5.010	4197.400	KLSE	
19	DRB.MY	DRB-Hicom	2.640	92.9	2.640	92.9	2.640	-0.030	-1.114	2.640	2.660	2.620	2.670	4210.900	KLSE	
20	ECW.MY	Eco World	0.640	38.9	0.630	38.9	0.630	-0.015	-2.326	0.640	0.640	0.630	0.645	563.100	KLSE	
21	EKO.MY	Ekovest	0.840	760	0.835	760	0.835	-0.005	-0.395	0.835	0.845	0.830	0.840	34347.800	KLSE	
22	FAM.MY	F&M	34.800	1.2	34.500	1.2	34.500	+0.080	+0.233	34.160	34.700	34.160	34.420	151.000	KLSE	
23	FGV.MY	Fields Group	1.080	340.6	1.070	340.6	1.070	-0.040	-3.604	1.100	1.110	1.070	1.110	6062.000	KLSE	
24	GAM.MY	Gamuda	3.750	13.2	3.700	13.2	3.700	-0.080	-2.115	3.750	3.760	3.690	3.780	3604.400	KLSE	
25	GDEX.MY	GD Eindex	0.290	330	0.285	330	0.285	-0.005	-1.515	0.280	0.290	0.280	0.285	1846.400	KLSE	

1. Right Click on any contract listed in Price View.
2. Click on **Launch Chart Live** to open the chart for selected contract.
3. Click on **New Alert** to create a new price alert.
4. Click on **Add to WatchList** to add selected contract to the desired WatchList.
5. Click on **Save WatchList** to save current WatchList settings.
6. Click on **Change WatchList** to change to the desired WatchList.
7. Click on **Theme** to select one of the three available themes or any other themes created.
8. To apply or remove grid lines, click on **GridLine**. The check mark shows that the function is applied.
9. Click on **Columns** to customise and check which ones to display in the **Price View**.
10. Click on **Option** to access **WatchList Editor**.



## 5.4 Set New Alerts

Click on **Alerts** to display **Alert View**, to set **Price Alert** or **Order Alert**.



### 5.4 a) Set Price Alerts

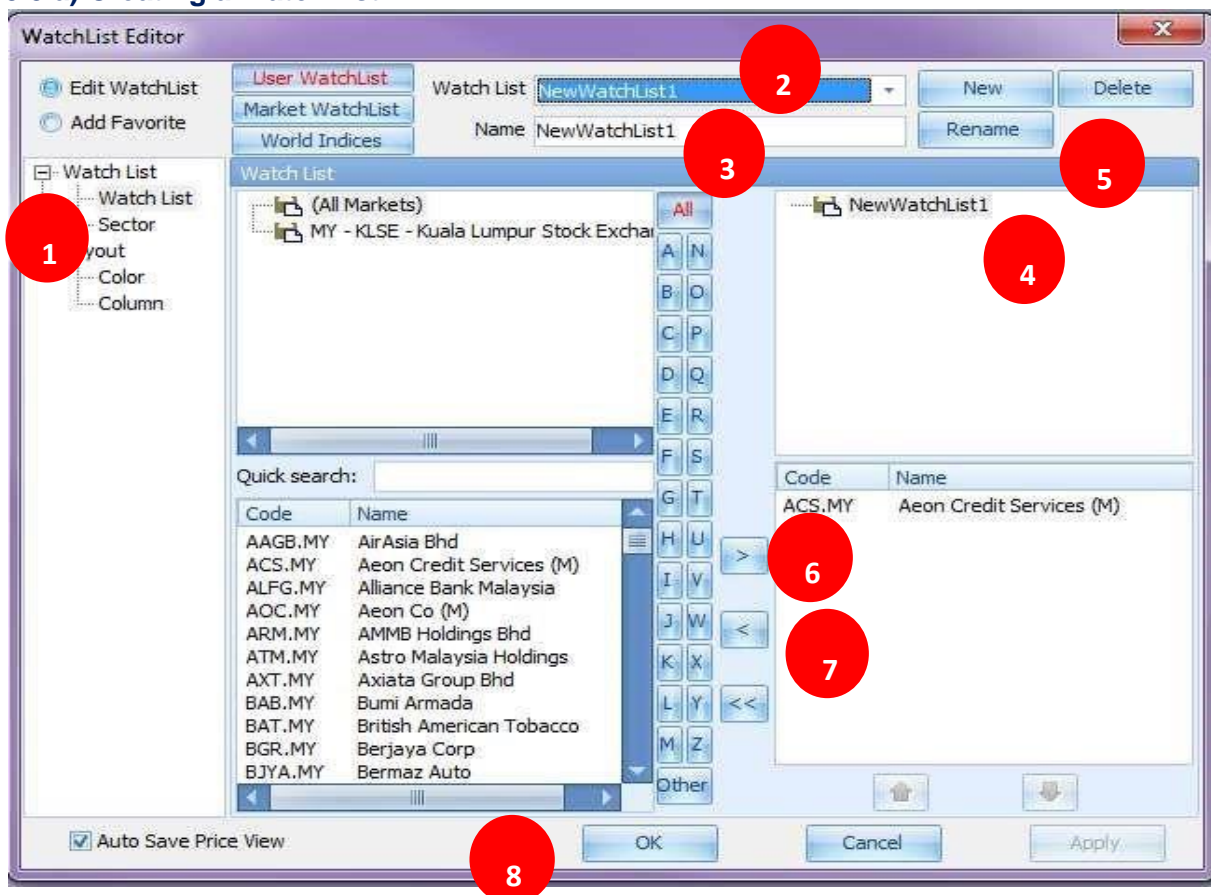
**Price Alert** allows you to set price alerts for desired contracts, based on conditions that you set.

1. Click on to set a **New Alert**.
2. Select **Contract Code** from list of drop down menu or click **Search**.
3. Check on price or volume conditions you desire to trigger the alert.
4. Click on **Active** (one time alert) or **Retrigger** (recurring alert).
5. Select a **Delivery Mode** to receive the alert via Phillip CFD Trader or email.
6. Set your email address (es) to receive email alert.
7. Set a message if desired.
8. Click **Save**.

## 5.5 Watchlist Editor

The WatchList Editor enables you to customise and place the list of your favorite trading instruments or contracts at your fingertips. The Phillip CFD Trader WatchList allows you to add contracts across various exchanges into the same WatchList (Maximum of 50 contracts within each WatchList).

### 5.5 a) Creating a WatchList

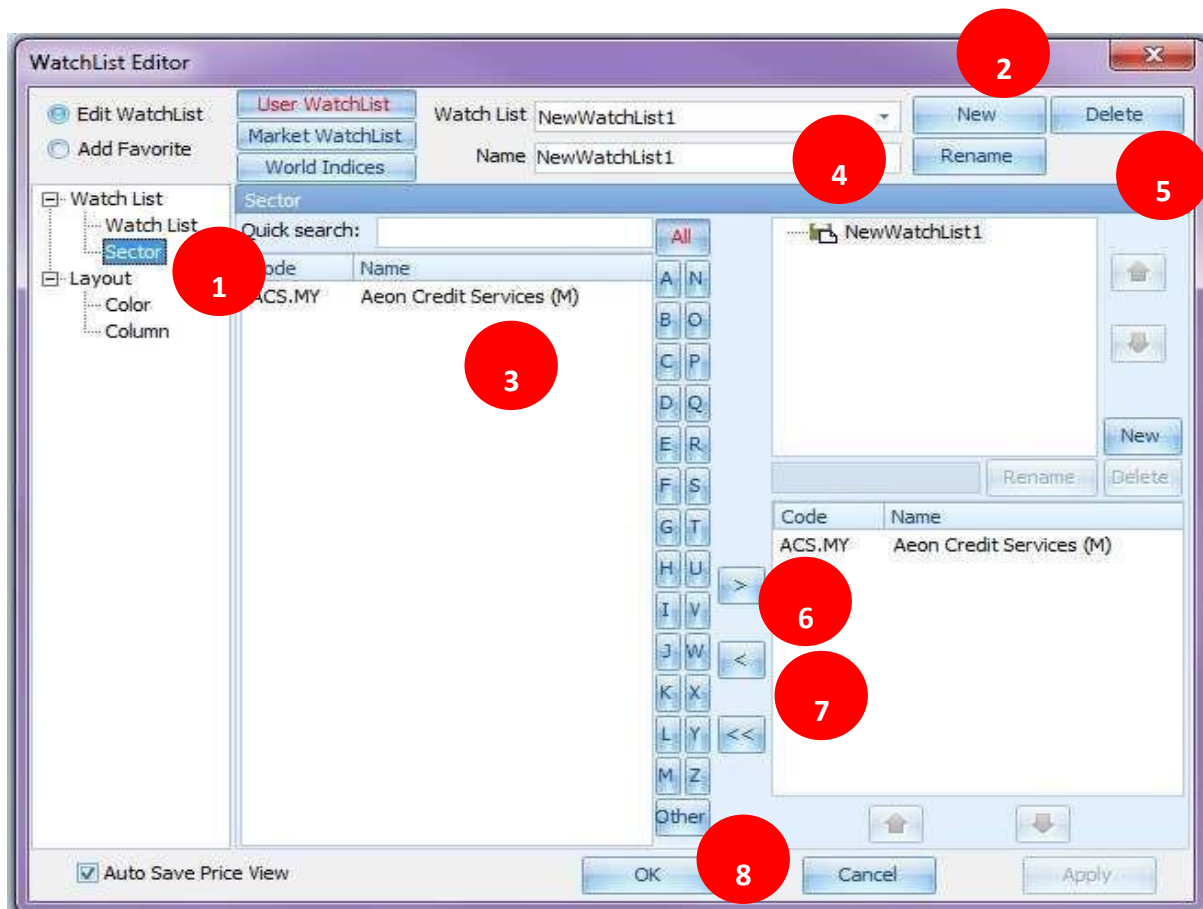


1. Select **WatchList**> **WatchList**.
2. Click **New**.
3. Enter name of the WatchList in **Name** field.
4. Click **Rename**.
5. Click **Delete** to delete WatchList.
6. Select desired contract(s) and click > to add the contract(s) into the WatchList.
7. To remove the contract, select contract and click<. To remove all contracts, click <<.



8. To save WatchList, click **Apply** and **OK**.

### 5.5 b) Creating sector



1. Select **WatchList> Sector**.

2. Click **New**.

3. Enter name of the sector in **Name** field.

4. Click **Rename**.

5. Click **Delete** to delete sector.

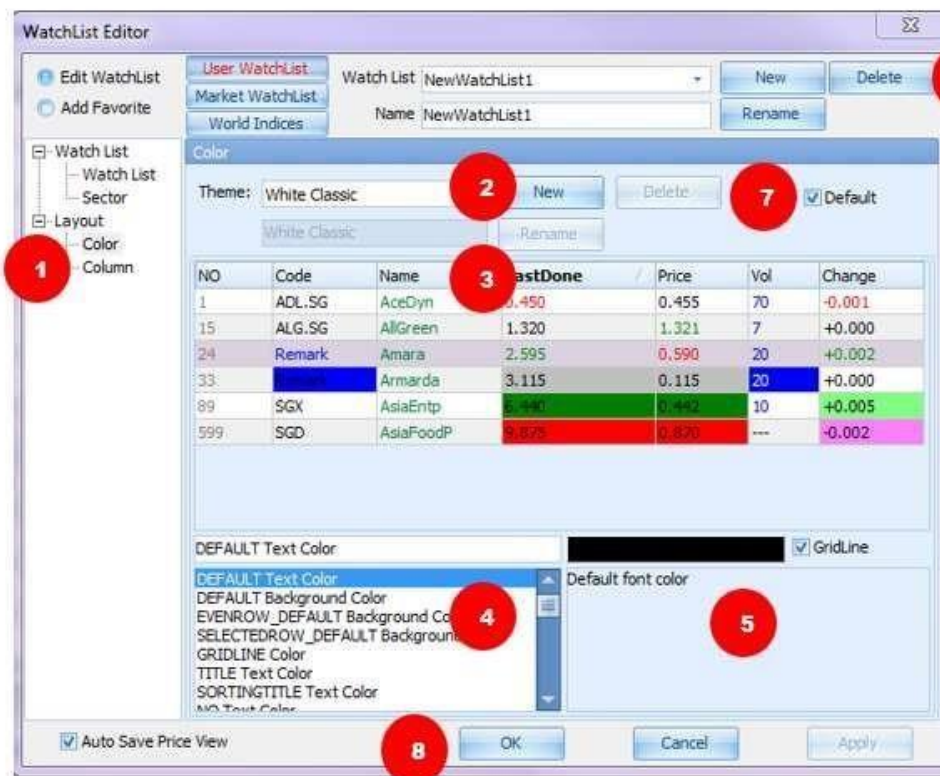
6. Select the contract(s) and click **>** to add contract(s) into the sector.

7. To remove contract, click **<**. To remove all contracts, click **<<**.

8. To save sector, click **Apply** and **OK**.

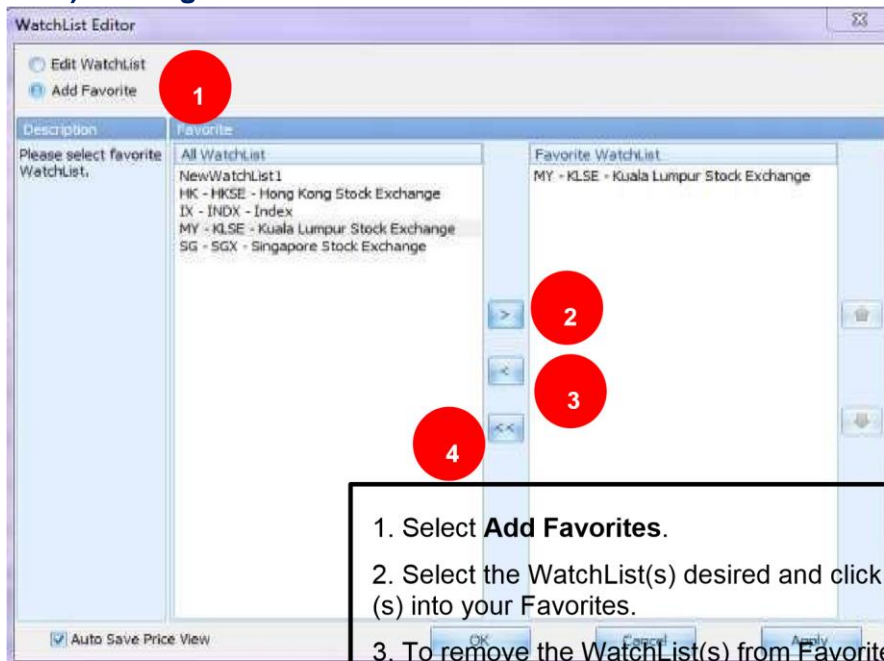
### 5.5 c) Changing Layout- Colour

You can either select from the existing themes or customise your own themes.



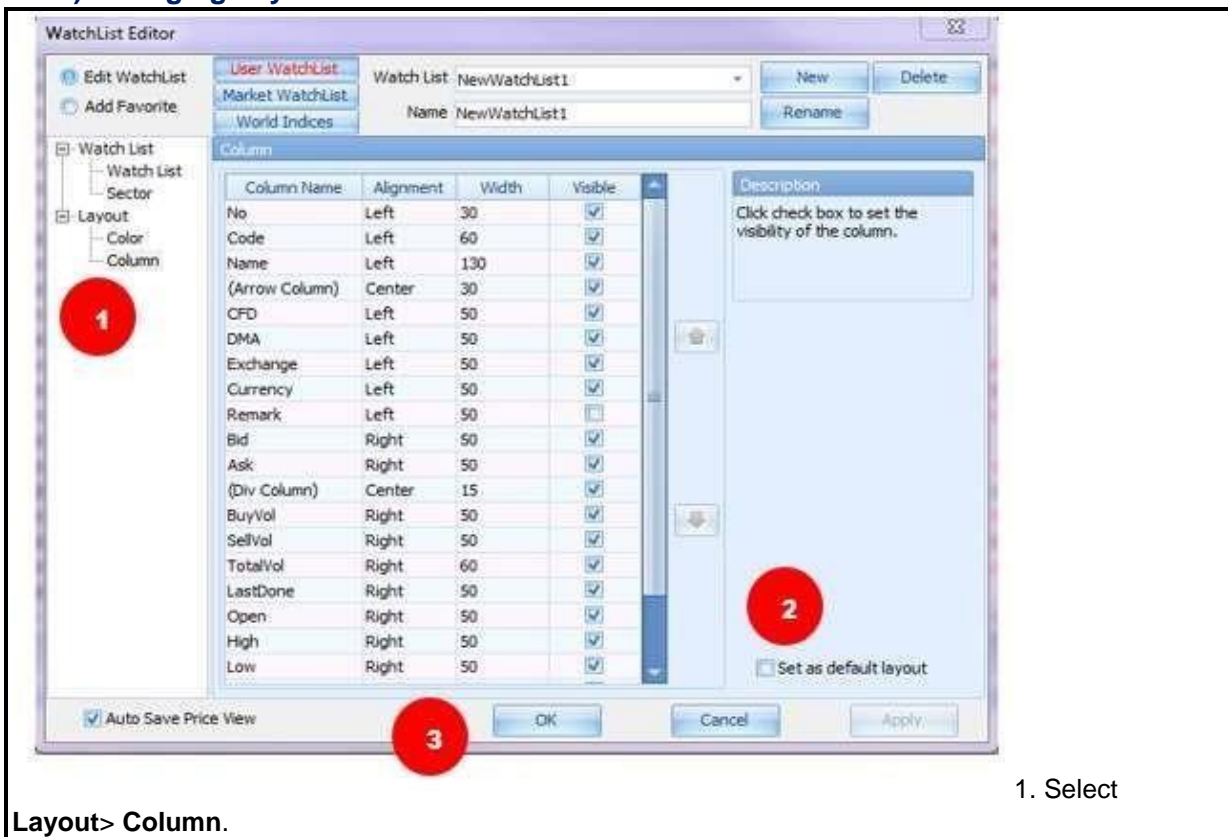
1. Select **Layout> Color**.
2. Click **New**.
3. Enter name of the new theme and click **Rename**.
4. To change theme attributes, select from list of attributes.
5. Click on displayed default color to make a selection from color palette.
6. Click **Delete** to delete the theme.
7. Make a theme default by checking **Default**.
8. To save the theme, click **Apply** and **OK**.

### 5.5 d) Adding WatchList to Favourites



1. Select **Add Favorites**.
2. Select the WatchList(s) desired and click > to add the WatchList (s) into your Favorites.
3. To remove the WatchList(s) from Favorites, click <. To remove all the WatchLists click <<.
4. To save your Favorites, click **Apply** and **OK**.

### 5.5 e) Changing Layout-Column



Layout> Column.

1. Select

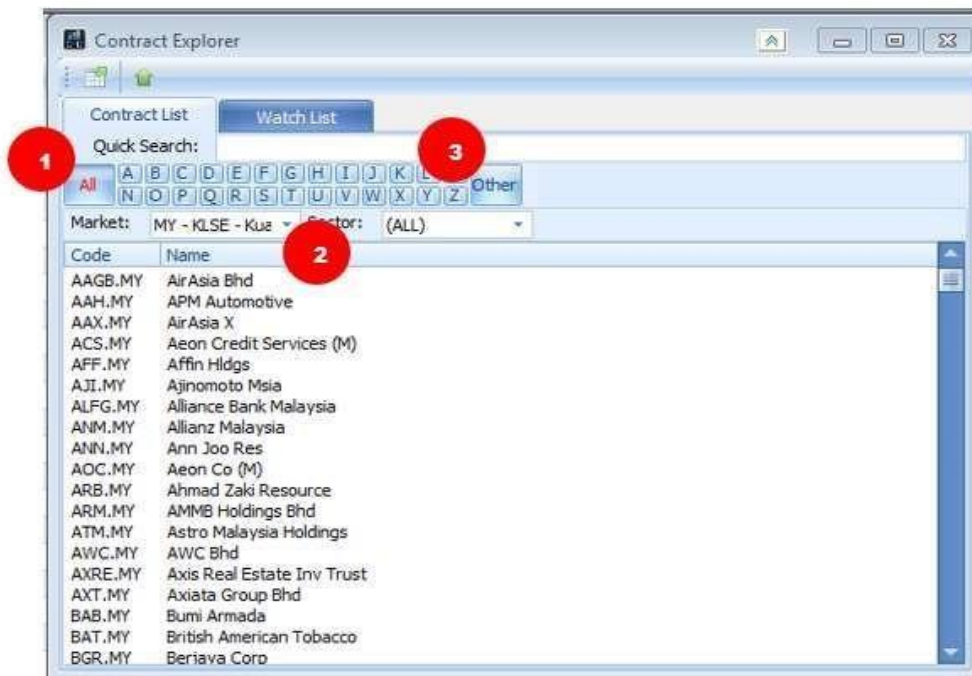
- To display a certain column, check in the checkbox corresponding to its attribute. This selection can be set as default by checking **Set as default layout**.

3. To click **Apply** and **OK**.

## 5.6 Contract Explorer

Click on Contract Explorer to easily search for contracts based on markets, or within specified Watchlist(s).

### 5.6 a) Contract List



To search for contracts within different markets.

- Click on **All** or individual alphabets.

- Select Market.

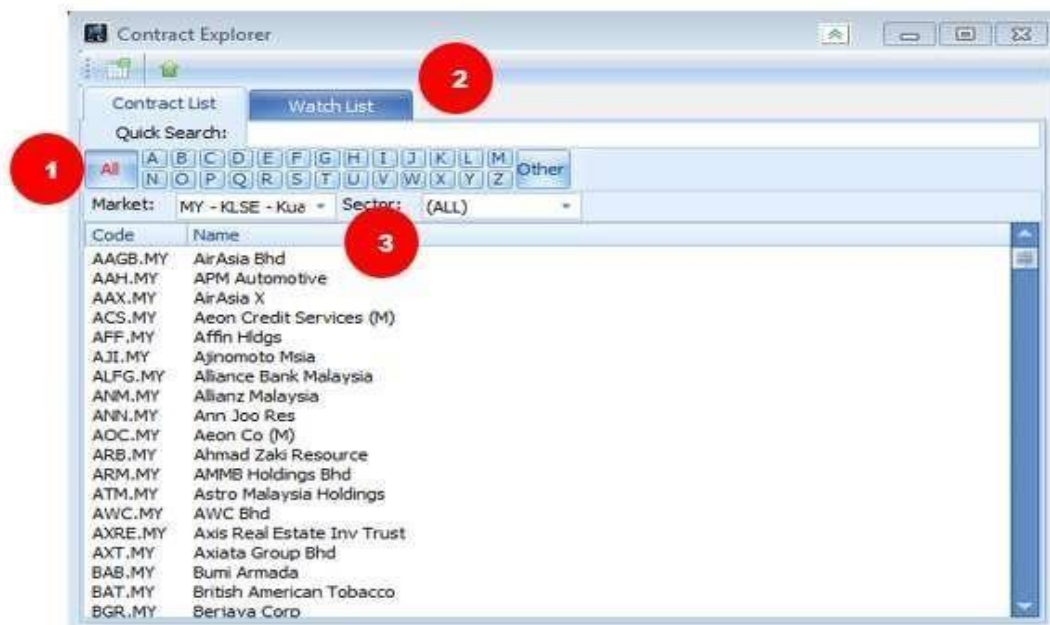
- Use the Quick Search bar, which predicts the contract you are searching for.

- Right click on the contract to Edit WatchList.

To search for contracts within WatchLists.

- Click on **All** or individual alphabets.
- Select WatchList.
- Use the Quick Search bar, which predicts the contract you are searching for.
- Right click on the contract to Edit WatchList.

### 5.6 b) Watchlist

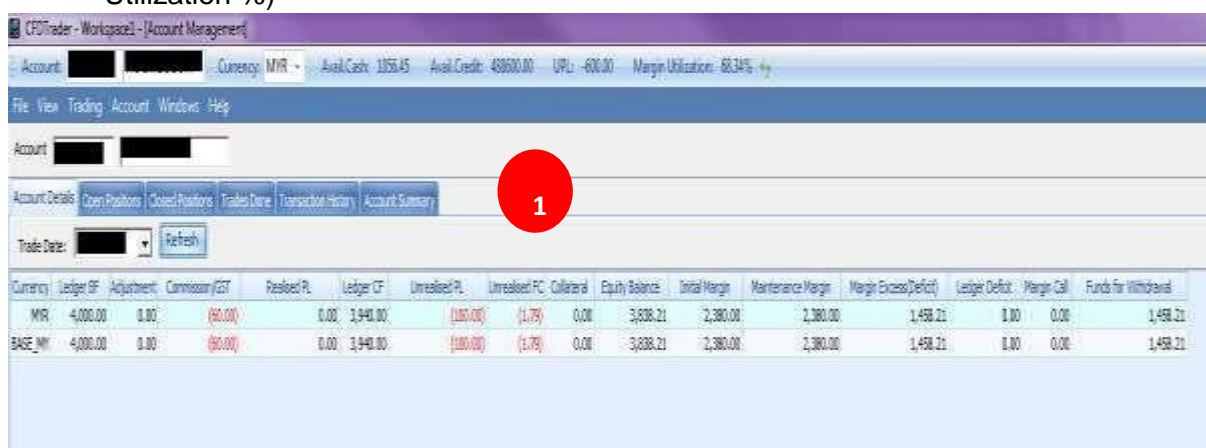


## Chapter 6: Account

### 6.0 Account Management

Click on **Account Management** for information as below:

1. Account Details
2. Open Position / Closed position
3. Trade Done
4. Transaction History
5. Account Summary (Unrealized P/L, Equity Balance, Available Cash and Margin Utilization %)





CFDTrader - Workspace1 - [Account Management]

Account: [Redacted] Currency: MYR Avail.Cash: 1136.45 Avail.Credit: 488500.00 UPL: -500.00 Margin Utilization: 66.97%

File View Trading Account Windows Help

Account: [Redacted] **2**

Account Details Open Positions Closed Positions Trades Done Transaction History Account Summary

Last Updated: 2019/8/5 10:24:13 AM **Mark to Market Prices are delayed by 15-30 mins, except for Index and SG equity CFD contracts.**

Contract No.	Name	Position	Qty	Avg Trade Price	Mark to Market Price	Profit/Loss	Unrealised P/L	Initial Margin	Maintenance Margin	Trade Date	Expiry Date	Market	Currency	Order Type
B VSI.MY	VSI	Long	10,000	1.2000	1.1500	(300.00)	1.76	2,300.00	2,300.00			KLSE	MYR	DMA

CFDTrader - Workspace1 - [Account Management]

Account: [Redacted] Currency: MYR Avail.Cash: 1056.45 Avail.Credit: 488600.00 UPL: -800.00 Margin Utilization: 68.34%

File View Trading Account Windows Help

Account: [Redacted]

Account Details Open Positions Closed Positions Trades Done Transaction History Account Summary

From Date: 30/07/2019 To Date: 05/08/2019 Refresh Last Updated: 2019/8/5 10:56:56 AM

Trade Date	Expiry Date	Action	Description	Contract No.	Price	Buy Qty	Sell Qty	Contract Cx	Market	Currency	Order Typ
2019/8/1	-	Long	VSI	34554 (DMA)	1.2000	10,000	--	VSI.MY	KLSE	MYR	DMA

CFDTrader - Workspace1 - [Account Management]

Account: [Redacted] Currency: MYR Avail.Cash: 1056.45 Avail.Credit: 488600.00 UPL: -800.00 Margin Utilization: 68.34%

File View Trading Account Windows Help

Account: [Redacted] **4**

Account Details Open Positions Closed Positions Trades Done Transaction History Account Summary

Month: 八月 2019 Refresh

Date	Description	Ledger
		MYR
31 七月 2019	Account Balance B/F	4,000.00
01 八月	Commission for VSI.MY(DMA)	(60.00)
	<b>Subtotal</b>	<b>(60.00)</b>
	Equity Balance(MYR Based)	3,636.45
	C/F	3,940.00
	Acc Unrealised Profit/Loss	(300.00)
	Acc Unrealised Finance Charges	(3.55)
	Equity C/F	3,636.45



CFDTrader - Workspace1 - [Account Management]

Account: [REDACTED] Currency: MYR Avail.Cash: 1136.45

File View Trading Account Windows Help

Account [REDACTED]

Account Details Open Positions Closed Positions Trades Done Transaction History Account Summary

Refresh Last Updated: 2019/8/5 10:49:05 AM

MYR

Ledger Balance: 3,936.45  
 Unrealized P/L: (500.00)  
**Equity Balance: 3,436.45**  
 Initial Margin: 2,300.00  
**Available Cash: 1,136.45**  
 Margin Utilization %: 66.93  
 Credit Left: 488,500.00  
 Credit Limit: 500,000.00

### 6.1 Order Status



Detail	NAME	BUY/SELL	STATUS	TYPE	DURATION	QTY(S)	PRICE(S)	QTY(C)	PRICE(C)	TIME(S)	TIME(C)	MSG
Parent	Germany 30 Index EUR1 CFD	Buy	Triggered	CFD Stop Limit	Day Order	1	12987.700	1	12987.700	Apr 26 2018 11:45:27 AM	Apr 30 2018 02:00:00 PM	---
Parent	UK 08 USD100 CFD	Buy	Triggered	CFD Stop Limit	Day Order	1	71.550	1	71.550	Apr 12 2018 07:24:37 PM	Apr 12 2018 07:24:37 PM	---
Parent	EU 50 Index EUR1 CFD	Sell	Triggered	CFD Stop Limit	Day Order	1	3418.060	1	3418.060	Apr 12 2018 05:44:50 PM	Apr 12 2018 05:46:04 PM	---
Parent	EU 50 Index EUR1 CFD	Buy	Triggered	CFD Stop Limit	Day Order	1	3420.040	1	3420.040	Apr 12 2018 05:42:45 PM	Apr 12 2018 05:42:45 PM	---
Parent	EU 50 Index EUR1 CFD	Buy	Triggered	CFD Stop Limit	Day Order	1	3420.040	1	3420.040	Apr 12 2018 05:43:33 PM	Apr 12 2018 05:43:33 PM	---
Parent	Abbott Laboratories	Buy	Received	DMA Limit	Day Order	1	63.250	---	---	Jan 26 2018 05:57:45 PM	---	---
Parent	My E.G. Services	Buy	Received	DMA Limit	Day Order	100	2.600	---	---	Jan 25 2018 11:12:54 AM	---	---

□ Double click on specific order to view Details





## **Chapter 7 : Disclaimer**

This document is provided to you for general information only and does not constitute a recommendation, an offer or solicitation to purchase or sell the product mentioned herein. It does not have any regard to your specific investment objectives, financial situation and any of your particular needs. Accordingly, no warranty whatsoever is given and no liability whatsoever is accepted for any loss arising whether directly or indirectly as a result of you acting based on this information. Investments are subject to investment risks. You should also consider the commission and finance costs involved for trading CFDs. The resulting deficits in your account are subject to penalty charges. The value of investments denominated in foreign currencies may diminish or increase due to changes in the rates of exchange.

You may wish to obtain advice from a qualified financial adviser, pursuant to a separate engagement, before making a commitment to purchase any of the investment products mentioned herein. In the event that you choose not to obtain advice from a qualified financial adviser, you should assess and consider whether the investment product is suitable for you before proceeding to invest and we do not offer any advice in this regard unless mandated to so do by way of a separate engagement.

CFD trading carries a high degree of risk and may not be suitable for customers whose investment objective is preservation of capital and/or whose risk tolerance is low. Customers are advised to understand the nature and risks involved in margin trading. Customers should note that any CFD offered is not approved or endorsed by the issuer or originator of the underlying security and that the issuer or originator is not privy to the CFD contract. Phillip Capital Sdn Bhd reserves the right to amend this document without prior notice. You are advised to read carefully and understand the Disclosure Document and Product Highlight Sheet which can be obtained at <https://www.phillip.com.my/product/cfd-101/>, before undertaking transactions in CFDs.